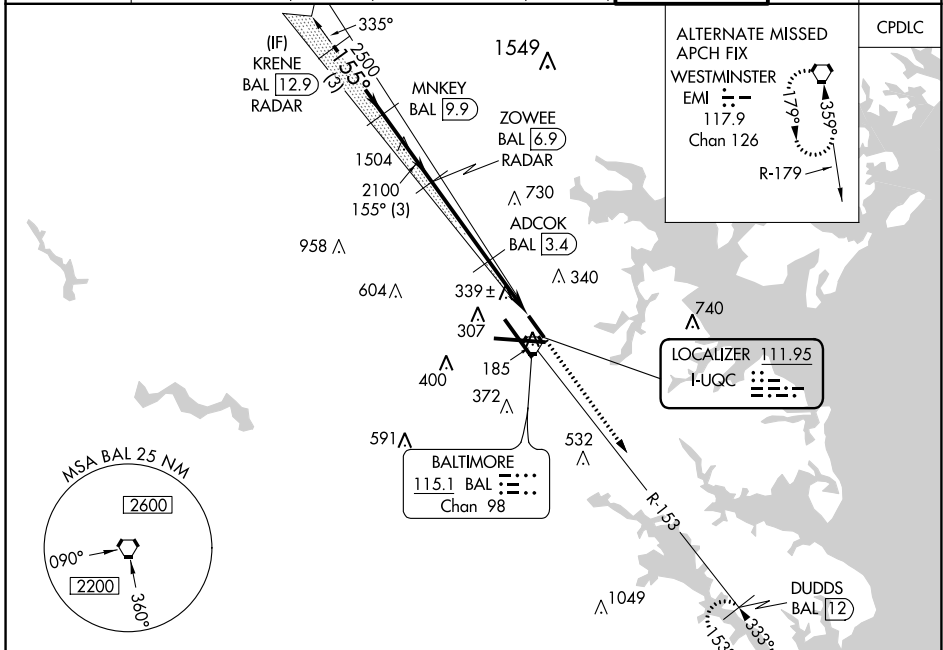


LOC I-UQC <b>111.95</b>	APP CRS <b>155°</b>	Rwy Idg TDZE Apt Elev	<b>5000</b> <b>142</b> <b>143</b>
----------------------------	------------------------	-----------------------------	---

BALTIMORE/  
WASHINGTON INTL THURGOOD MARSHALL (BWI)  
**ILS or LOC RWY 15L**

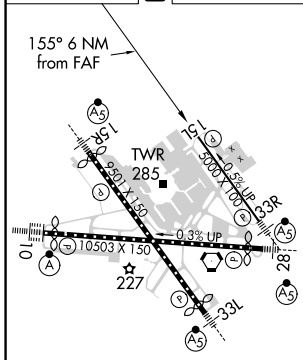
<p><b>▼</b> DME from BAL VORTAC. Simultaneous reception of I-UQC and BAL DME required. DME required. Simultaneous approach authorized with Rwy 15R. Helicopter visibility reduction below RVR 4000 NA.</p>		<p>MISSED APPROACH: Climb to 2500 on heading 155° and BAL VORTAC R-153 to DUDDS/BAL 12 DME and hold.</p>	
D-ATIS <b>115.1 127.8</b>	POTOMAC APP CON <b>119.0 282.275</b> (020°-100°) <b>124.55 317.425</b> (101°-130°)	<b>119.7 290.475</b> (131°-180°) <b>128.7 307.9</b> (181°-019°)	BALTIMORE TOWER <b>119.4 257.8</b>
			GND CON <b>121.9</b>
			CLNC DEL <b>118.05</b>



NE-3, 07 OCT 2021 to 04 NOV 2021

NE-3, 07 OCT 2021 to 04 NOV 2021

ELEV 143	<b>D</b>	TDZE 142
----------	----------	----------



TDZ/CL Rwy 10 and 33L  
REIL Rwy 15L and 33R  
HIRL all Rwy

FAF to MAP 6 NM

Knots	60	90	120	150	180
Min:Sec	6:00	4:00	3:00	2:24	2:00

**RADAR REQUIRED**

	KRENE BAL 12.9 RADAR	MNKEY BAL 9.9 RADAR	ZOWEE BAL 6.9 RADAR	2500 ↑ hdg 155°	BAL R-153	DUDDS BAL 12
3000	2100		2100	2500	*LOC only.	
GS 3.00° TCH 47	2100		*980	ADCOK BAL 3.4	*BAL 2.1	
	3 NM		3 NM	3.5 NM	1.3 NM	1.2 NM
CATEGORY	A		B	C		D
S-ILS 15L	544-1 $\frac{3}{8}$		402 (500-1 $\frac{1}{2}$ )			NA
S-LOC 15L	560/55		418 (500-1)			NA
<b>C</b> CIRCLING	640-1 497 (500-1)		660-1 517 (600-1)			NA