

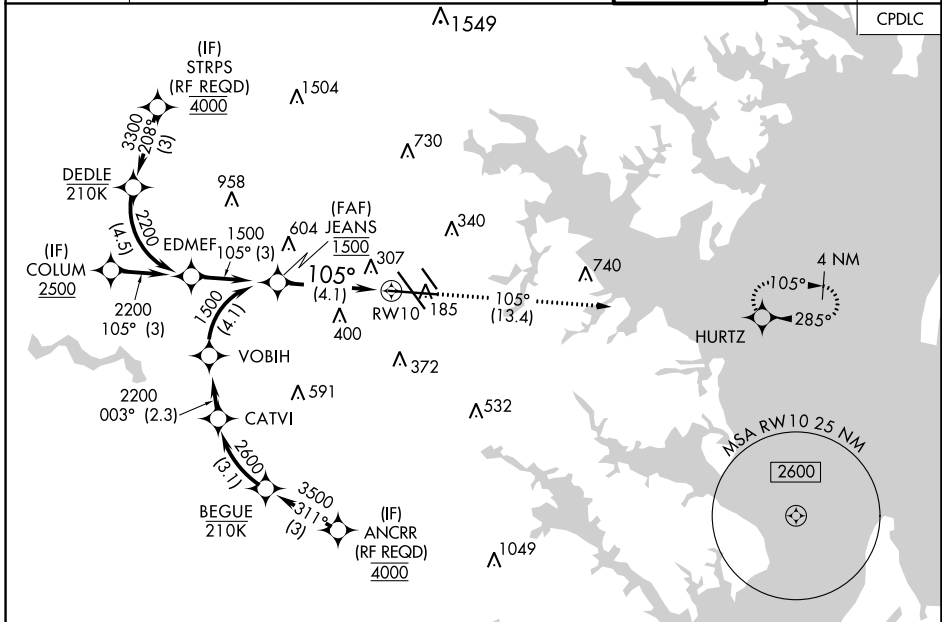
APP CRS 105°	Rwy Idg TDZE Apt Elev	9953 143 143
------------------------	-----------------------------	---

RNAV (RNP) Z RWY 10

BALTIMORE/WASHINGTON INTL THURGOOD MARSHALL (BWI)

RNP AR APCH. ▼ For uncompensated Baro-VNAV systems, procedure NA below -12°C (11°F) or above 54°C (130°F). For inop ALS, increase RNP 0.11 all Cats visibility to RVR 4500, increase RNP 0.30 all Cats visibility to 1¾.		ALSF-2 A	MISSED APPROACH: Climb to 2500 on track 105° to HURTZ and hold.
---	--	-------------	--

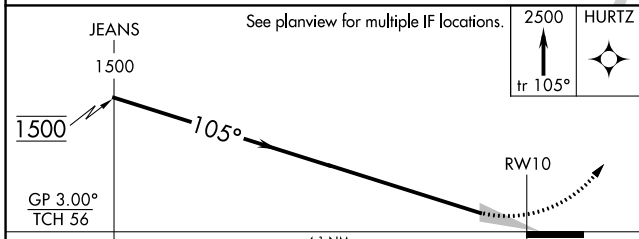
D-ATIS 115.1 127.8	POTOMAC APP CON 119.0 282.275 124.55 317.425	(020°-100°) 119.7 290.475 (101°-130°) 126.7 307.9	(131°-180°) (181°-019°)	BALTIMORE TOWER 119.4 257.8	GND CON 121.9	CLNC DEL 118.05
------------------------------	--	--	----------------------------	---------------------------------------	-------------------------	---------------------------



NE-3, 07 OCT 2021 to 04 NOV 2021

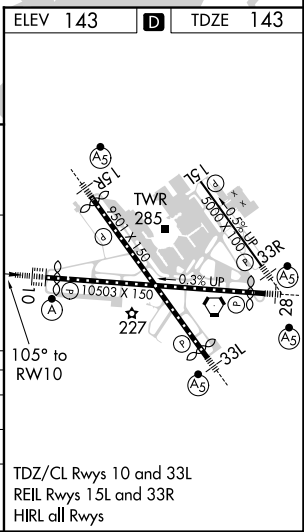
NE-3, 07 OCT 2021 to 04 NOV 2021

ELEV 143	D	TDZE 143
----------	---	----------



CATEGORY	A	B	C	D
RNP 0.11 DA		448/24	305 (400-½)	
RNP 0.30 DA		626/60	483 (500-½)	

AUTHORIZATION REQUIRED



RNAV (RNP) Z RWY 10