

RNAV (RNP) Z RWY 15R

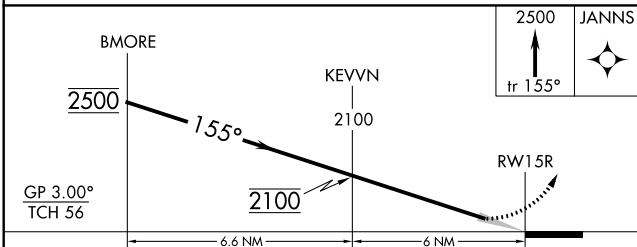
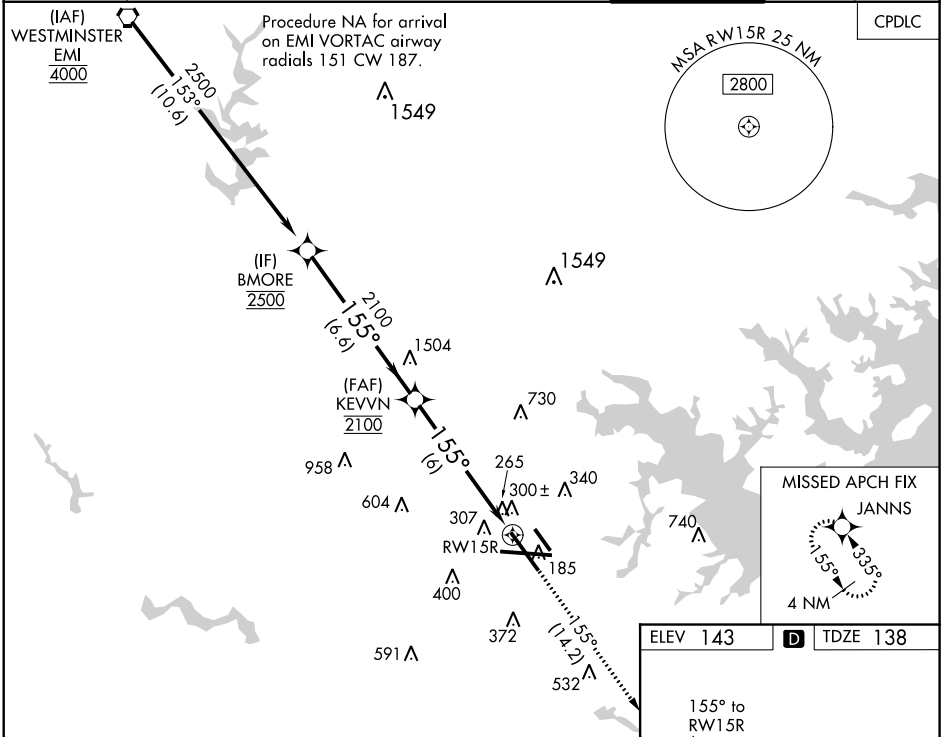
BALTIMORE/WASHINGTON INTL THURGOOD MARSHALL (BWI)

APP CRS	Rwy Idg	8301
155°	TDZE	138
	Apt Elev	143

▼ For uncompensated Baro-VNAV systems, procedure NA below -12°C (11°F) or above 54°C (130°F). For inop MALSR, increase RNP 0.11 DA all Cats visibility to 1¼ mile, and RNP 0.30 DA all Cats visibility to 1½ mile. GPS Required.

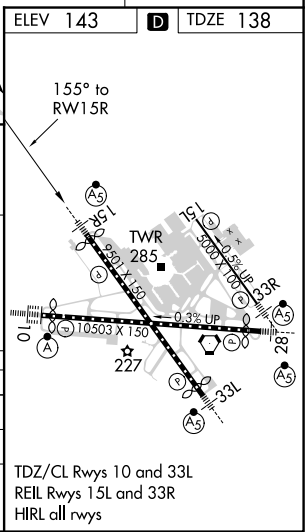
MALSR  MISSED APPROACH: Climb to 2500 on track 155° to JANNS and hold.

D-ATIS	POTOMAC APP CON	BALTIMORE TOWER	GND CON	CLNC DEL
115.1 127.8	(020°-100°) 119.7 290.475 (131°-180°)	119.4 257.8	121.9	118.05
	(101°-130°) 128.7 307.9 (181°-019°)			



CATEGORY	A	B	C	D
RNP 0.11 DA		513/38	375 (400-¾)	
RNP 0.30 DA		588/52	450 (500-1)	

AUTHORIZATION REQUIRED



TDZ/CL Rwys 10 and 33L
REIL Rwys 15L and 33R
HIRL all rwys

NE-3, 07 OCT 2021 to 04 NOV 2021

NE-3, 07 OCT 2021 to 04 NOV 2021