

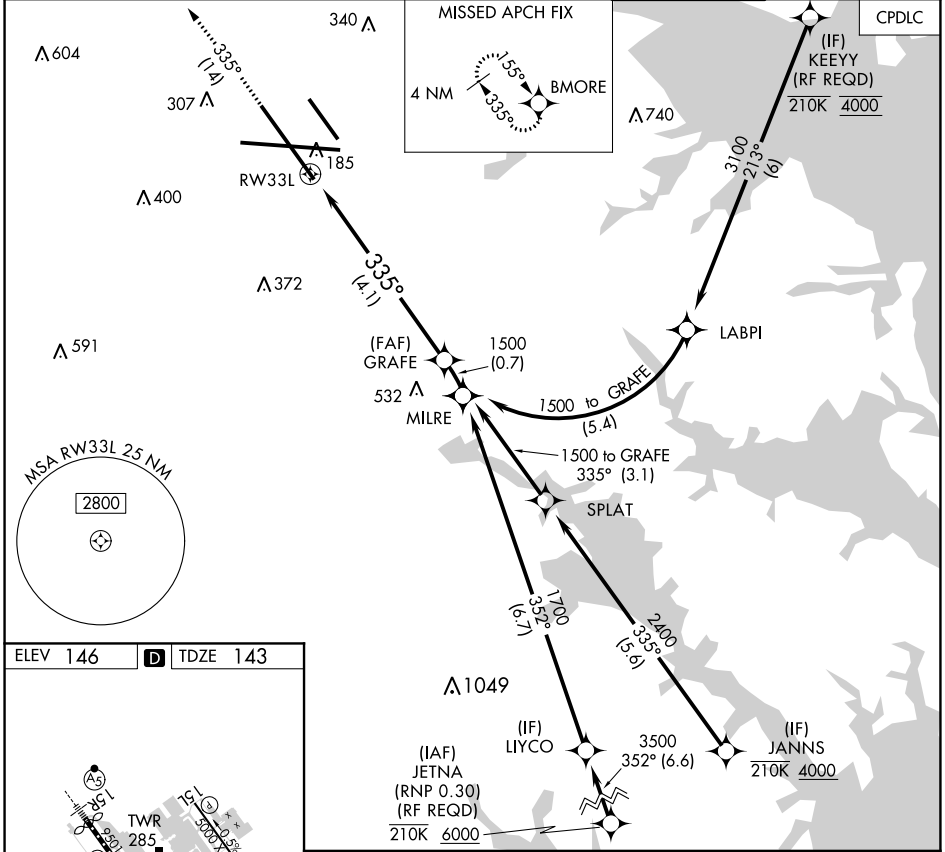
# RNAV (RNP) Z RWY 33L

BALTIMORE/WASHINGTON INTL THURGOOD MARSHALL (BWI)

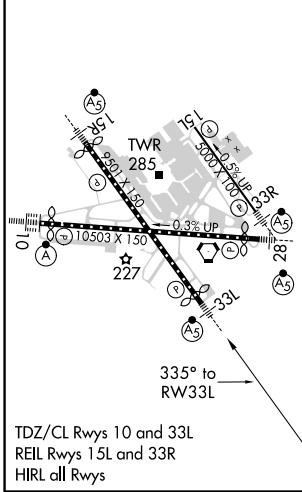
APP CRS <b>335°</b>	Rwy Idg TDZE Apt Elev	<b>8301</b> <b>143</b> <b>146</b>
------------------------	-----------------------------	---

RNP AR APCH.	MALSR	MISSED APPROACH: Climb to 3000 on track 335° to BMORE and hold.
<p>▼ For uncompensated Baro-VNAV systems, procedure NA below -12°C or above 54°C. For inop ALS, increase RNP 0.30 all Cats visibility to RVR 6000.</p>		

D-ATIS <b>115.1 127.8</b>	POTOMAC APP CON (020°-100°) <b>119.7 290.475</b> (131°-180°) (101°-130°) <b>128.7 307.9</b> (181°-019°)	BALTIMORE TOWER <b>119.4 257.8</b>	GND CON <b>121.9</b>	CLNC DEL <b>118.05</b>
------------------------------	---	---------------------------------------	-------------------------	---------------------------



ELEV 146	<b>D</b>	TDZE 143
----------	----------	----------



3000	BMORE	See planview for multiple IF locations. VGSI and RNAV glidepath not coincident (VGSI Angle 3.00/TCH 72).	GRAFE 1500
tr 335°			
CATEGORY	A	B	C
RNP 0.30 DA	496/35 353 (400-5%)		
<b>AUTHORIZATION REQUIRED</b>			

NE-3, 07 OCT 2021 to 04 NOV 2021

NE-3, 07 OCT 2021 to 04 NOV 2021