

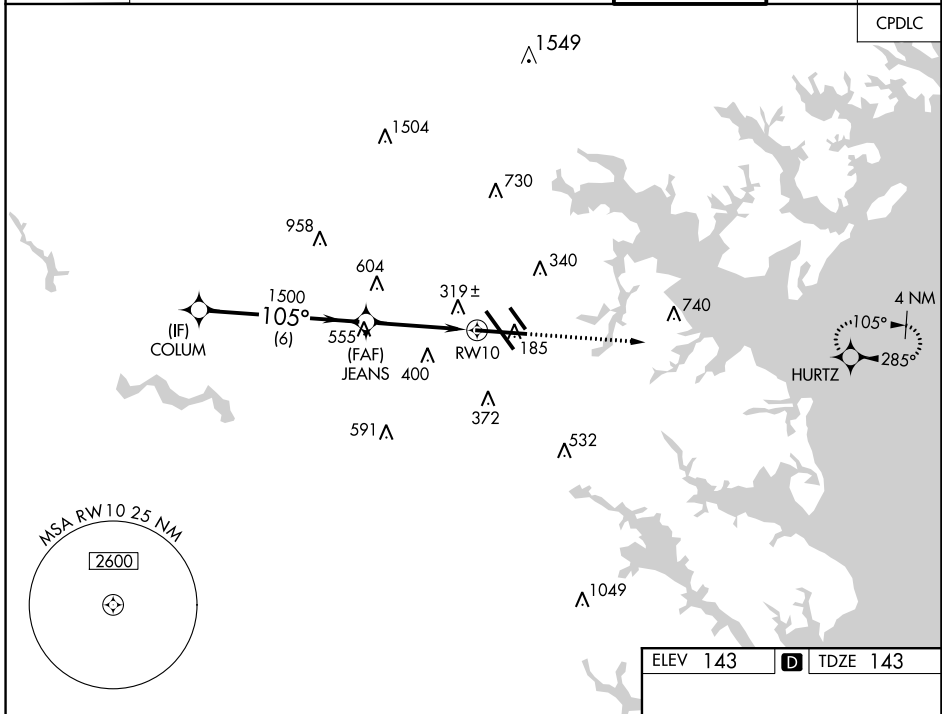
WAAS CH 53707 W10A	APP CRS 105°	Rwy Idg TDZE 143 Apt Elev 143	9953
--	------------------------	---	-------------

RNAV (GPS) Y RWY 10

BALTIMORE/WASHINGTON INTL THURGOOD MARSHALL (BWI)

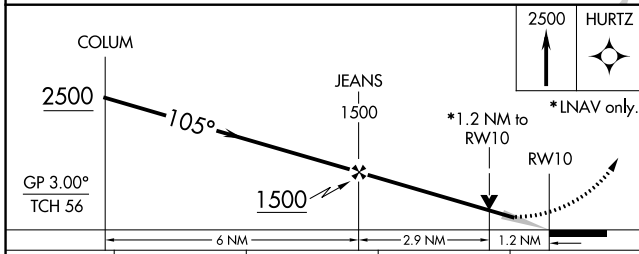
RNP APCH.	ALSF-2	MISSED APPROACH: Climb to 2500 direct HURTZ and hold.
<p>▽ For uncompensated Baro-VNAV systems, LNAV/VNAV NA below -12°C (11°F) or above 54°C (130°F).</p> <p>▲</p>		

D-ATIS 115.1 127.8	POTOMAC APP CON (020°-100°) 119.7 290.475 (131°-180°) (101°-130°) 124.55 317.425 (181°-019°)	BALTIMORE TOWER 119.4 257.8	GND CON 121.9	CLNC DEL 118.05
------------------------------	--	---------------------------------------	-------------------------	---------------------------



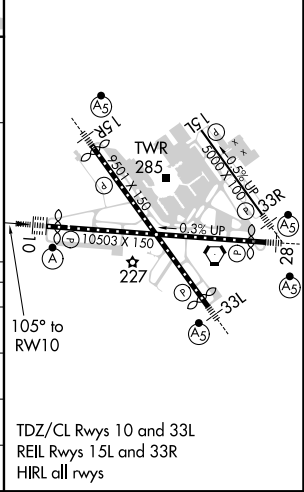
NE-3, 07 OCT 2021 to 04 NOV 2021

NE-3, 07 OCT 2021 to 04 NOV 2021



ELEV 143	D TDZE 143
----------	-------------------

CATEGORY	A	B	C	D
LPV DA	343/18		200 (200-1/2)	
LNAV/VNAV DA	586/50		443 (500-1)	
LNAV MDA	580/24	437 (500-1/2)	580/40	437 (500-3/4)
C CIRCLING	640-1 497 (500-1)	660-1 517 (600-1)	700-1 1/2 557 (600-1 1/2)	860-2 1/4 717 (800-2 1/4)



RNAV (GPS) Y RWY 10