

WAAS CH <b>45730</b> <b>W31A</b>	APP CRS <b>307°</b>	Rwy Idg <b>5200</b> TDZE <b>1195</b> Apt Elev <b>1201</b>
--	------------------------	---

# RNAV (GPS) RWY 31

WAUSAU DOWNTOWN (AUW)

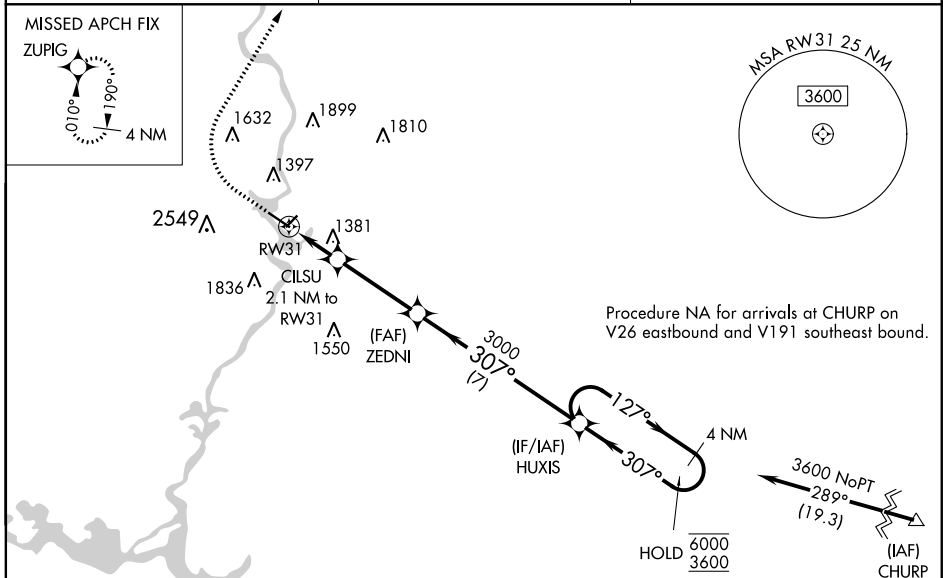
RNP APCH.

**⚠** Circling NA to Rws 12W and 30W. Circling NA southwest of Rwy 13-31. For uncompensated Baro-VNAV systems, LNAV/VNAV NA below -21°C or above 54°C.

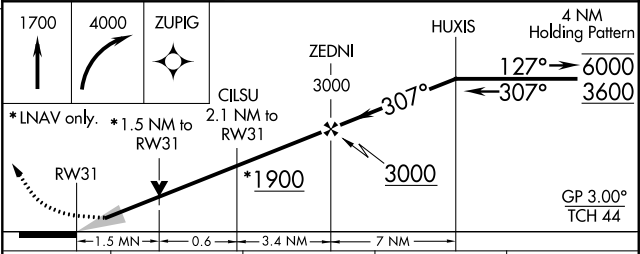
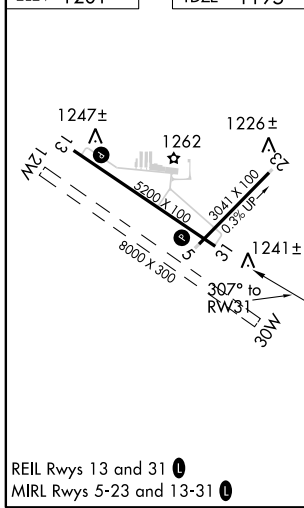
**⚠** MISSED APPROACH: Climb to 1700 then climbing right turn to 4000 direct ZUPIG and hold.

**\*\*** Missed approach requires minimum climb of 300 feet per NM to 2100.

ASOS <b>125.925</b>	MINNEAPOLIS CENTER <b>124.4 317.7</b>	UNICOM <b>122.7 (CTAF) 0</b>
------------------------	--	---------------------------------



ELEV 1201	TDZE 1195
-----------	-----------



CATEGORY	A	B	C	D
LPV DA	1445-7/8		250 (300-7/8)	
LNAV/VNAV DA	**1505-1		310 (400-1)	
LNAV/VNAV DA	1661-15/8		466 (500-15/8)	
LNAV MDA	1700-1 505 (500-1)		1700-13/8 505 (500-13/8)	
<b>C</b> CIRCLING	1840-1 639 (700-1)		1960-2 759 (800-2) 2260-3 1059 (1100-3)	

EC-3, 07 OCT 2021 to 04 NOV 2021

EC-3, 07 OCT 2021 to 04 NOV 2021