

| | | |
|--|------------------------|-----------------|
| WAAS CH 61315 W14A | APP CRS 137° | Rwy Idg 5001 |
| | | TDZE 292 |
| | | Apt Elev 294 |

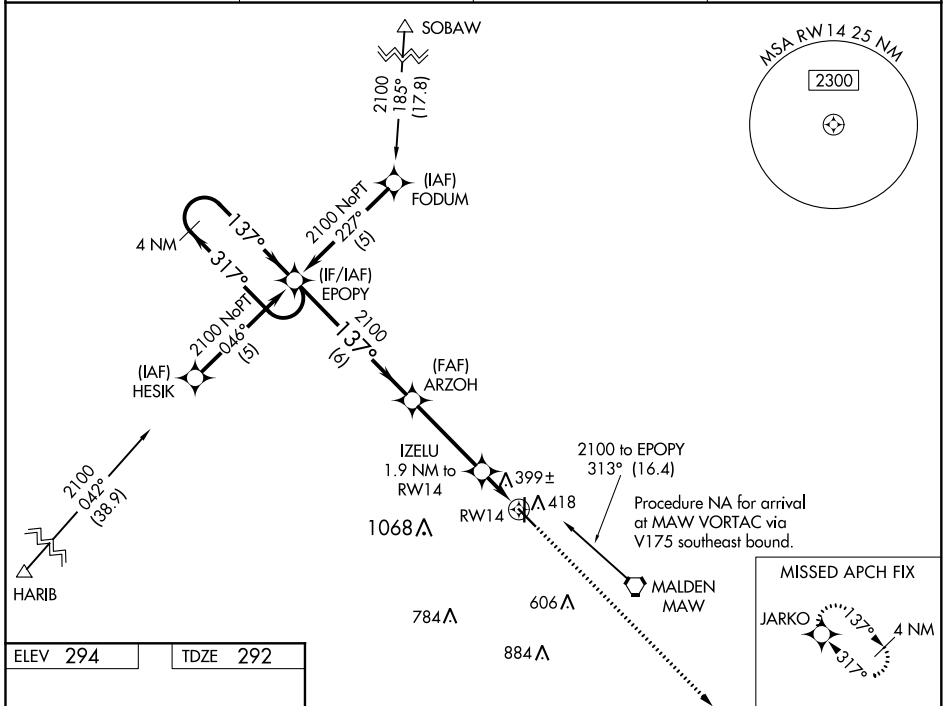
RNAV (GPS) RWY 14

MALDEN RGNL (MAW)

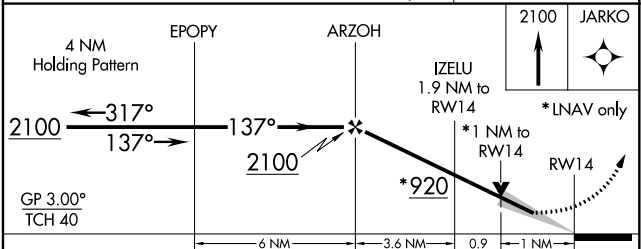
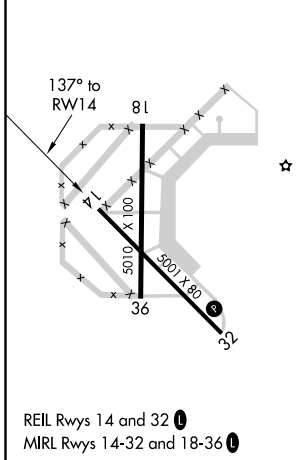
NA DME/DME RNP-0.3 NA. When local altimeter setting not received, use Poplar Bluff altimeter setting and increase all DA 50 feet, all MDA 60 feet, LNAV/VNAV all Cats and LNAV Cat C visibilities ¼ mile. For uncompensated Baro-VNAV systems, LNAV/VNAV NA below -15°C (5°F) or above 54°C (130°F). Baro-VNAV and VDP NA when using Poplar Bluff altimeter setting.

MISSED APPROACH: Climb to 2100 direct JARKO and hold.

| | | | |
|----------------------------|--|-----------------------|-------------------------------|
| AWOS-3PT 119.825 | MEMPHIS CENTER 133.65 292.15 | GCO 135.075 | UNICOM 122.8 (CTAF) |
|----------------------------|--|-----------------------|-------------------------------|



| | |
|----------|----------|
| ELEV 294 | TDZE 292 |
|----------|----------|



| CATEGORY | A | B | C | D |
|--------------|----------------------|----------------------|------------------------|----|
| LPV DA | 542-1 250 (300-1) | | | NA |
| LNAV/VNAV DA | 698-1½ 406 (500-1½) | | | NA |
| LNAV MDA | 660-1 368 (400-1) | | | NA |
| CIRCLING | 720-1 426 (500-1) | 820-1 526 (600-1) | 820-1½ 526 (600-1½) | NA |

NC-3, 07 OCT 2021 to 04 NOV 2021

NC-3, 07 OCT 2021 to 04 NOV 2021