

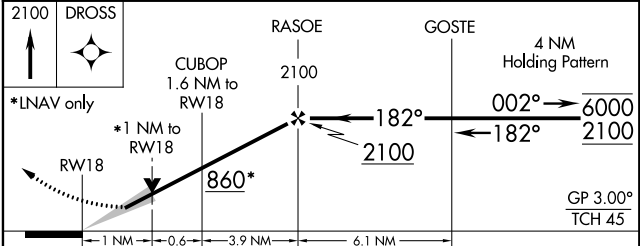
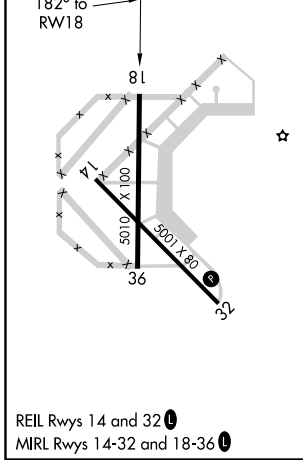
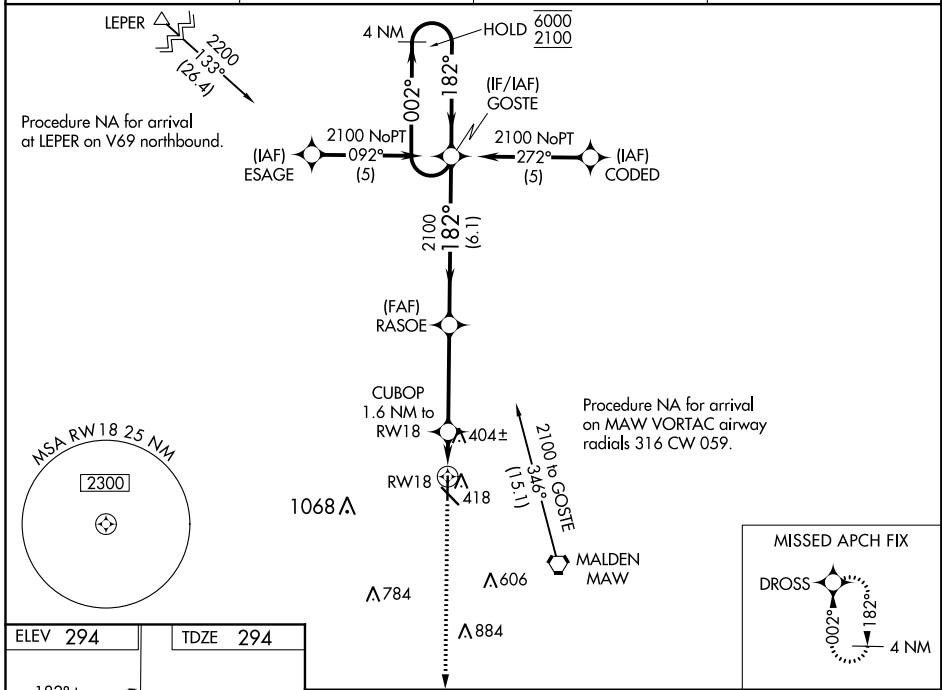
WAAS CH 78315 W18A	APP CRS 182°	Rwy Idg TDZE Apt Elev	5010 294 294
--	------------------------	-----------------------------	---

RNAV (GPS) RWY 18

MALDEN RGNL (MAW)

RNP APCH.	<p>▼ For uncompensated Baro-VNAV systems, LNAV/VNAV NA below -15°C or above 54°C. Baro-VNAV and VDP NA when using Poplar Bluff altimeter setting. When local altimeter setting not received, use Poplar Bluff altimeter setting and increase LPV DA to 594 feet; increase LNAV/VNAV DA to 719 feet; increase all MDAs 60 feet and LNAV visibility Cat C 3/8 SM.</p>	MISSED APPROACH: Climb to 2100 direct DROSS and hold.
-----------	---	--

AWOS-3PT 119.825	MEMPHIS CENTER 133.65 292.15	GCO 135.075	UNICOM 122.8 (CTAF)
----------------------------	--	-----------------------	-------------------------------



CATEGORY	A	B	C	D
LPV DA	544-1 250 (300-1)			NA
LNAV/VNAV DA	669-1¼ 375 (400-1¼)			NA
LNAV MDA	680-1 386 (400-1)			NA
CIRCLING	720-1 426 (500-1)	820-1 526 (600-1)	820-1½ 526 (600-1½)	NA

NC-3, 07 OCT 2021 to 04 NOV 2021

NC-3, 07 OCT 2021 to 04 NOV 2021