

WAAS CH 40410 W32A	APP CRS 317°	Rwy ldg TDZE Apt Elev	5001 292 294
--	------------------------	-----------------------------	---

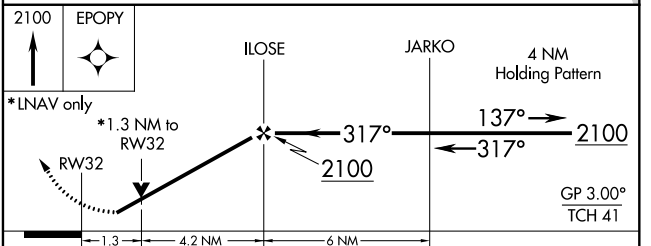
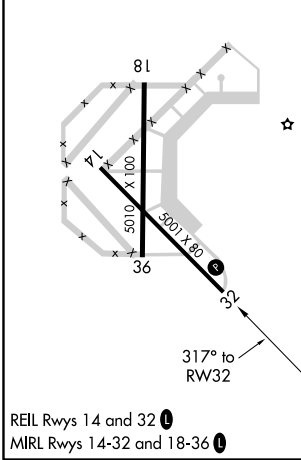
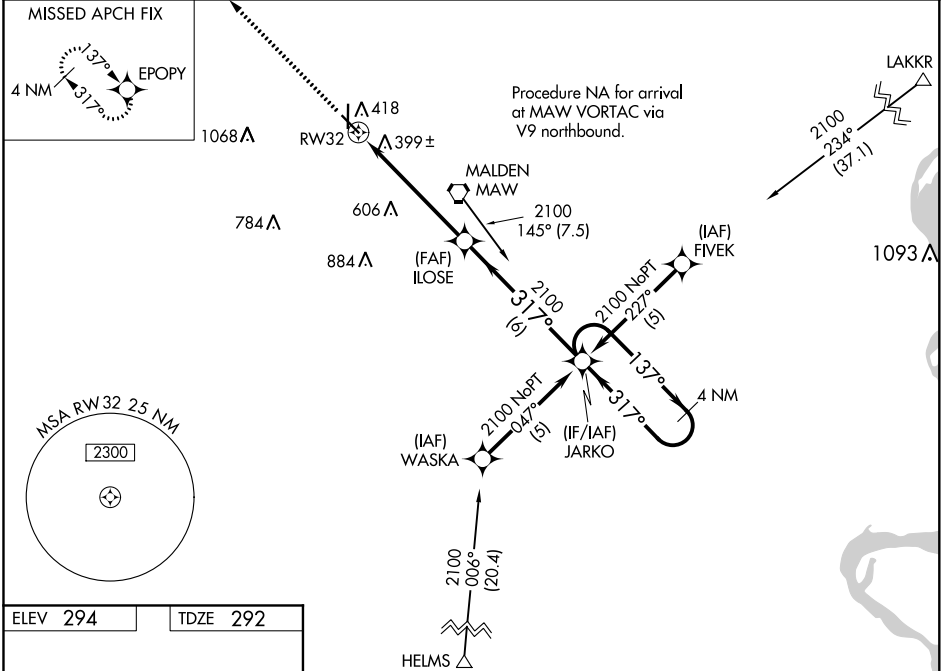
RNAV (GPS) RWY 32

MALDEN RGNL (MAW)

NA DME/DME RNP-0.3 NA. Visibility reduction by helicopters NA. When local altimeter setting not received, use Poplar Bluff altimeter setting and increase all DA 50 feet, all MDA 60 feet, increase LPV all Cats, LNAV/VNAV all Cats and LNAV Cat C visibilities ¼ mile. For uncompensated Baro-VNAV systems, LNAV/VNAV NA below -15°C (5°F) and above 54°C (130°F). Baro-VNAV and VDP NA when using Poplar Bluff altimeter setting.

MISSED APPROACH: Climb to 2100 direct EPOPY and hold.

AWOS-3PT 119.825	MEMPHIS CENTER 133.65 292.15	GCO 135.075	UNICOM 122.8 (CTAF)
----------------------------	--	-----------------------	-------------------------------



CATEGORY	A	B	C	D
LPV DA	581-1 289 (300-1)			NA
LNAV/VNAV DA	698-1½ 406 (500-1½)			NA
LNAV MDA	740-1	448 (500-1)	740-1¼ 448 (500-1¼)	NA
CIRCLING	740-1 446 (500-1)	820-1 526 (600-1)	820-1½ 526 (600-1½)	NA

NC-3, 07 OCT 2021 to 04 NOV 2021

NC-3, 07 OCT 2021 to 04 NOV 2021