

VORTAC MAW 111.2 Chan 49	APP CRS 120°	Rwy Idg TDZE Apt Elev	5001 292 294
--	------------------------	-----------------------------	---

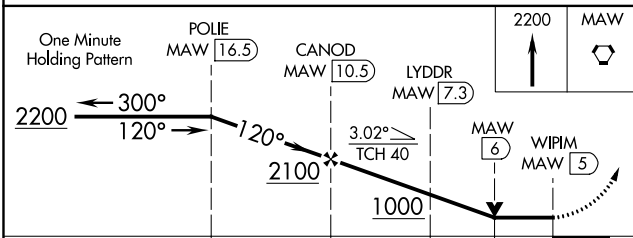
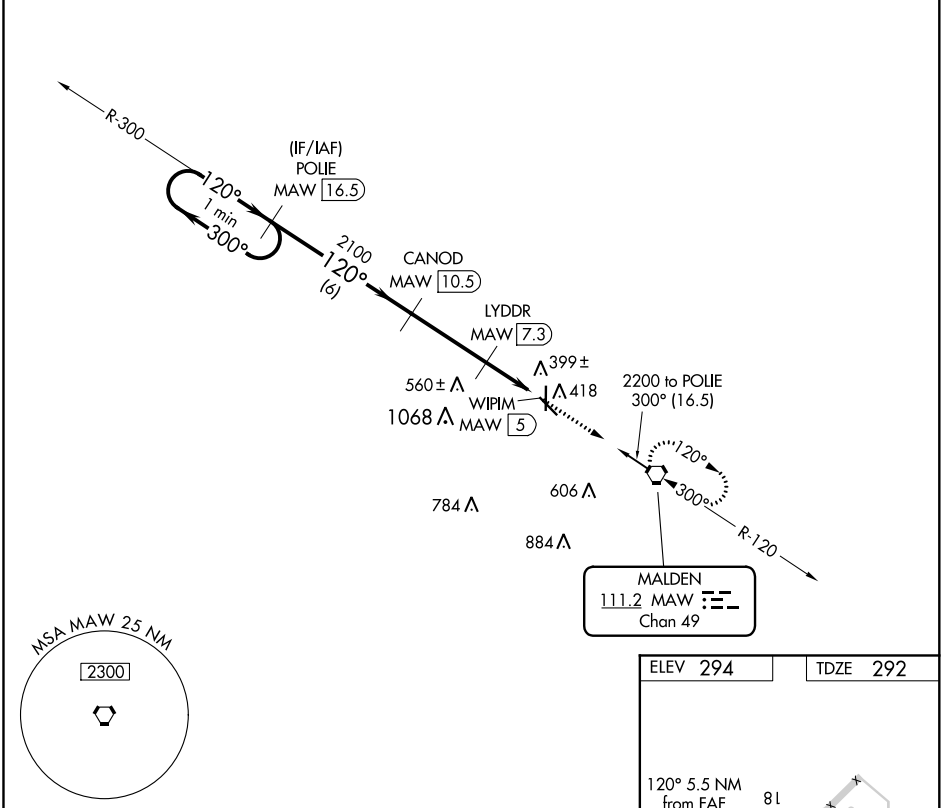
VOR/DME RWY 14

MALDEN RGNL (MAW)

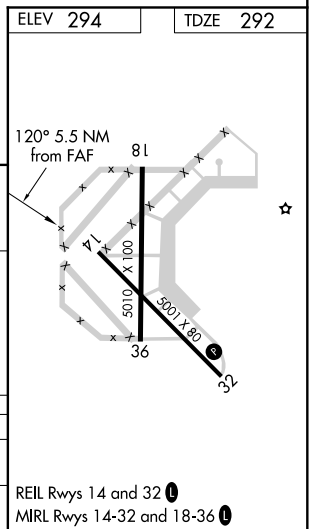
NA When local altimeter setting not received, use Poplar Bluff altimeter setting and increase all MDA 60 feet and S-14 Cat C visibility ¼ mile. VDP NA when using Poplar Bluff altimeter setting.

MISSED APPROACH: Climb to 2200 direct MAW VORTAC and hold, continue climb-in-hold to 2200.

AWOS-3PT 119.825	MEMPHIS CENTER 133.65 292.15	GCO 135.075	UNICOM 122.8 (CTAF)
----------------------------	--	-----------------------	-------------------------------



CATEGORY	A	B	C	D
S-14		660-1 368 (400-1)		NA
CIRCLING	720-1 426 (500-1)	820-1 526 (600-1)	820-1½ 526 (600-1½)	NA



NC-3, 07 OCT 2021 to 04 NOV 2021

NC-3, 07 OCT 2021 to 04 NOV 2021