

HI-TACAN RWY 24R

TACAN NKX Chan 33	APCH CRS 247°	Rwy Idg 24R 12,000 24L 8001	TDZE 24R 475 24L 477	AL-903 [USN] MIRAMAR MCAS (JOE FOSS FLD) (KNKX)
		Arprt Elev 477		

*When ALS inop, increase CAT CDE vis to 1 7/8 miles.
 ** CAT E circling not authorized S of Rwy 6R-24L.

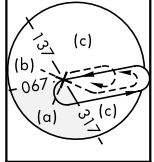


MISSED APPROACH: Climb to 1500, then climbing right turn to 7000 via NKX TACAN R-003 to HUKVO. Arc NE of NKX via 16 mile arc to WARNT and hold. Cross R-323 at 3000 mandatory, cross HUKVO at 6000 mandatory.

ATIS ★ 133.475 352.0	SOCAL APP CON 132.2 269.1	FOSS TOWER ★ 135.2 298.925 0	GND CON 128.625 307.325	CLNC DEL 125.975 254.325	ASR/ PAR	LA CENTER 291.7
--------------------------------	-------------------------------------	--	-----------------------------------	------------------------------------	-------------	---------------------------

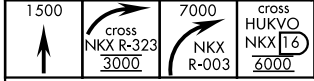
Knots	60	120	180	240	300	360
V/V(fpm)	275	550	825	1100	1375	1650

ATC climb of 275 ft/NM to 6000

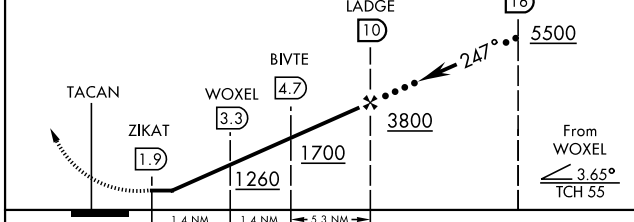
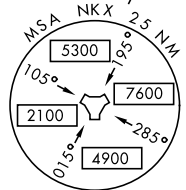


HIGH ALTITUDE FACILITIES

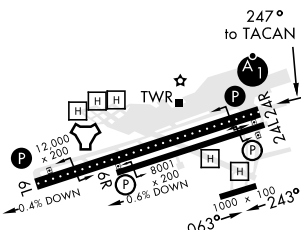
EMERG SAFE ALT
100 NM 13,600



VGSI and descent angles not coincident. RETOE R-067



ELEV 477	TDZE 24R 475
	TDZE 24L 477



CATEGORY	C	D	E
S-24R *	1140-1 1/2	665 (700-1 1/2)	
SIDE-STEP 24L	1140-1 7/8	663 (700-1 7/8)	
CIRCLING **	1140-1 7/8 663 (700-1 7/8)	1180-2 1/4 703 (800-2 1/4)	1360-3 883 (900-3)

HIRL Rwy 6L-24R
HIRL Rwy 6R-24L

HI-TACAN RWY 24R

SW-3, 07 OCT 2021 to 04 NOV 2021