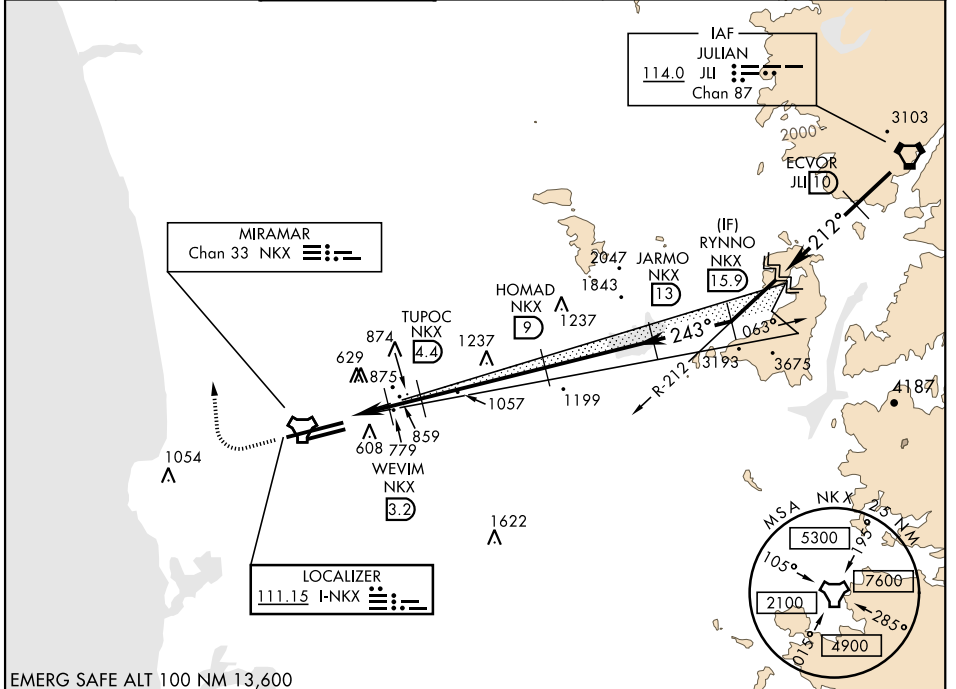


ILS or LOC/DME RWY 24R

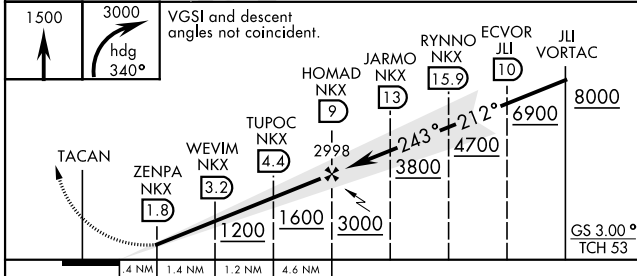
LOC I-NKX 111.15	APCH CRS 243°	Rwy Ldg	24L	24R
		TDZE	8001	12,000
		Arpt Elev	477	475

AL-903 [USN] MIRAMAR MCAS (JOE FOSS FLD) (KNKX)

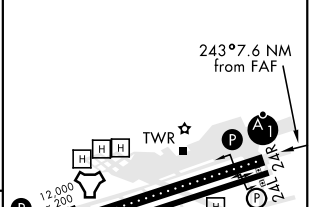
RADAR required.			ALSIF-1 	MISSED APPROACH: Climb to 1500, then climbing right turn to 3000 via heading 340°. Expect radar vectors.		
* When ALS inop, increase CAT ABCDE vis to 3/4 mile. ** When ALS inop, increase CAT AB vis to 1 mile, CAT CDE vis to 1 1/8 miles. *** CAT E circling not authorized S of Rwy 6R-24L.						
ATIS ★ 133.475 352.0	SOCAL APP CON 132.2 269.1	FOSS TOWER ★ 135.2 298.925	GND CON 128.625 307.325	CLNC DEL 125.975 254.325	LA CENTER 291.7	ASR/PAR



EMERG SAFE ALT 100 NM 13,600



ELEV 477	TDZE 24L 477
	TDZE 24R 475



CATEGORY	A	B	C	D	E
S-ILS 24R*	675 - 1/2		200	(200-1/2)	
S-LOC/DME 24R**	920-1/2	445 (500-1/2)	920-7/8	445 (500-7/8)	
SIDESTEP 24L	920-1	443 (500-1)	920-13/8	443 (500-13/8)	
CIRCLING***	940-1	960-1	960-1 1/2	1180-2 1/4	1360-3
	463 (500-1)	483 (500-1)	483 (500-1 1/2)	703 (800-2 1/4)	883 (900-3)

HIRL Rwy 6L-24R	
HIRL Rwy 6R-24L	

ILS or LOC/DME RWY 24R

SW-3, 07 OCT 2021 to 04 NOV 2021

SW-3, 07 OCT 2021 to 04 NOV 2021