

SAN DIEGO, CALIFORNIA

21112

RNAV (GPS) RWY 24R

WAAS CH 61450 W24B	APCH CRS 243°	Rwy Idg 12,000 TDZE 475 Arpt Elev 477
--------------------------	------------------	---------------------------------------------

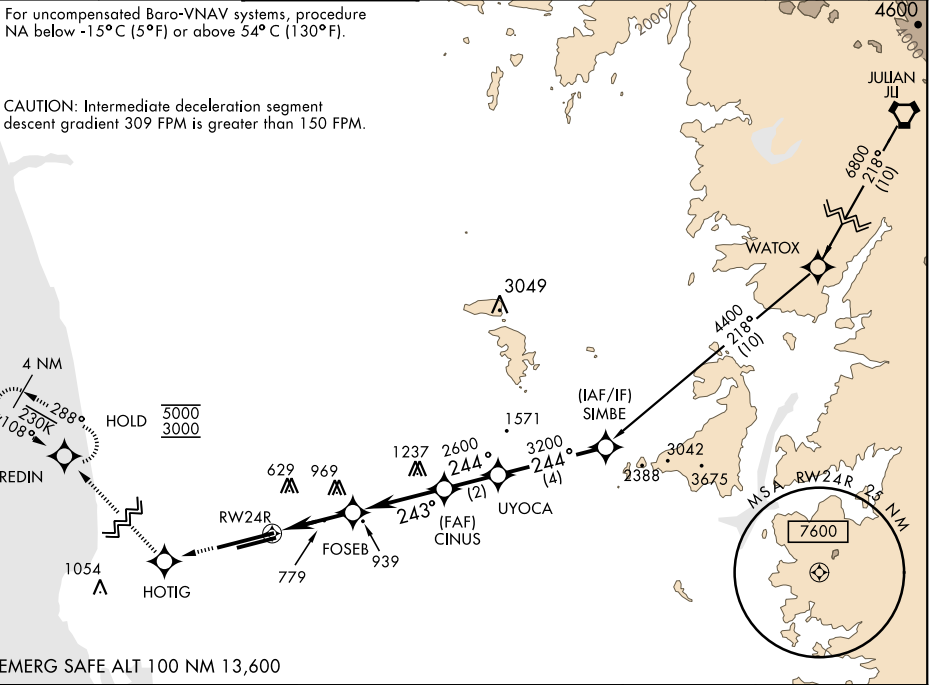
AL-903 [UN]

MIRAMAR MCAS (JOE FOSS FLD) (KNKX)

DME/DME RNP-0.3 NA.		ALSF-1 	MISSED APPROACH: Climb to 3000 direct HOTIG, 288° track to REDIN and hold.			
▼ ** When ALS inop, increase CAT ABCD vis to 3/4 mile. *** When ALS inop, increase CAT AB vis to 1 mile, CAT CD vis to 2 miles.						
ATIS ★ 352.0 133.475	SOCAL APP CON 132.2 269.1	FOSS TOWER ★ 135.2 298.925	GND CON 128.625 307.325	CLNC DEL 125.975 254.325	LA CENTER 291.7	ASR/ PAR

For uncompensated Baro-VNAV systems, procedure NA below -15°C (5°F) or above 54°C (130°F).

CAUTION: Intermediate deceleration segment descent gradient 309 FPM is greater than 150 FPM.



EMERG SAFE ALT 100 NM 13,600

3000 ↑	HOTIG 	REDIN 	VGSI and RNAV glidepath not coincident (VGSI Angle 3.00°/TCH 57°).		ELEV 477	TDZE 475
RW24R → 1.7 NM to RW24R 3 NM → 3.5 NM		FOSEB 1460	CINUS 2600	UYOCA 3200	SIMBE 4400	
243° → 244°		GP 3.00° TCH 53		063° → 243° 243° to RW24R		
CATEGORY	A	B	C	D		
LPV DA *		675-1/2	200 (200-1/2)			
LNAV/VNAV DA **		725-1/2	250 (300-1/2)			
LNAV MDA ***	1080-1/2	605 (700-1/2)	1080-1 1/8	605 (700-1 1/8)		
CIRCLING	1080-1	603 (700-1)	1080-1 3/4	603 (700-1 3/4)	1180-2 1/4	703 (800-2 1/4)
					HIRL Rwy 6L-24R HIRL Rwy 6R-24L	

SAN DIEGO, CALIFORNIA
Amdt 3 13SEP18

32°52'N-117°09'W

MIRAMAR MCAS (JOE FOSS FLD) (KNKX)

RNAV (GPS) RWY 24R

SW-3, 07 OCT 2021 to 04 NOV 2021

SW-3, 07 OCT 2021 to 04 NOV 2021