

# SWOLF-NINE DEPARTURE (SWOLF9 • SWOLF)

MIRAMAR MCAS (JOE FOSS FLD) (KNKX)

SAN DIEGO, CALIFORNIA

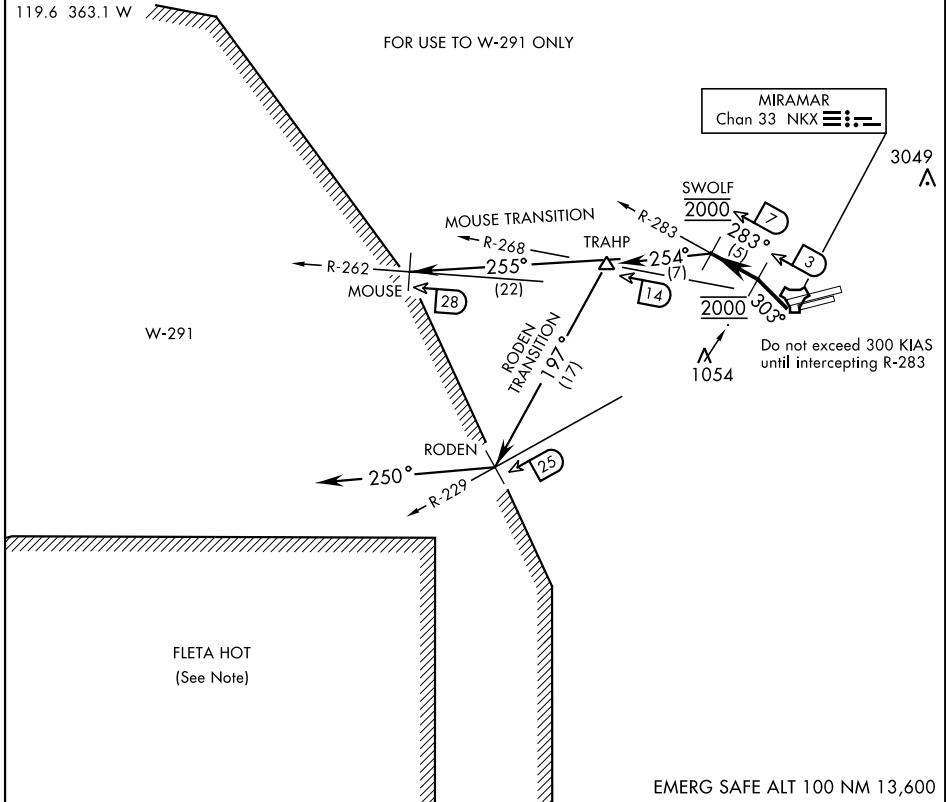
ATIS ★ 133.475 352.0  
 CLNC DEL  
 125.975 254.325  
 GND CON  
 128.625 307.325  
 FOSS TOWER ★  
 135.2 298.925  
 SOCAL DEP CON  
 119.6 363.1 W

SHL-903 [USN]

Rwy	Knots	60	120	180	240	300	360
24L/R	V/V(fpm)	780	1560	2340	3120	3900	4680

ATC Climb Rate to 2000

FOR USE TO W-291 ONLY



SW-3, 07 OCT 2021 to 04 NOV 2021

SW-3, 07 OCT 2021 to 04 NOV 2021

## DEPARTURE ROUTE DESCRIPTION

TAKE-OFF RWY 24L/R: Climbing right turn to 2000 via heading 303° to intercept and proceed via NKX TACAN R-283 to SWOLF. Complete turn within NKX 2 DME. Cross NKX R-283/3 DME at 2000 mandatory. Maintain 2000 at SWOLF mandatory. Thence...

MOUSE TRANSITION (SWOLF9 • MOUSE): Turn left heading 255° to intercept NKX R-262 at MOUSE. Maintain 2000 for entry into W-291.

(Continued on next page)

# SWOLF-NINE DEPARTURE (SWOLF9 • SWOLF)

SAN DIEGO, CALIFORNIA

MIRAMAR MCAS (JOE FOSS FLD) (KNKX)