

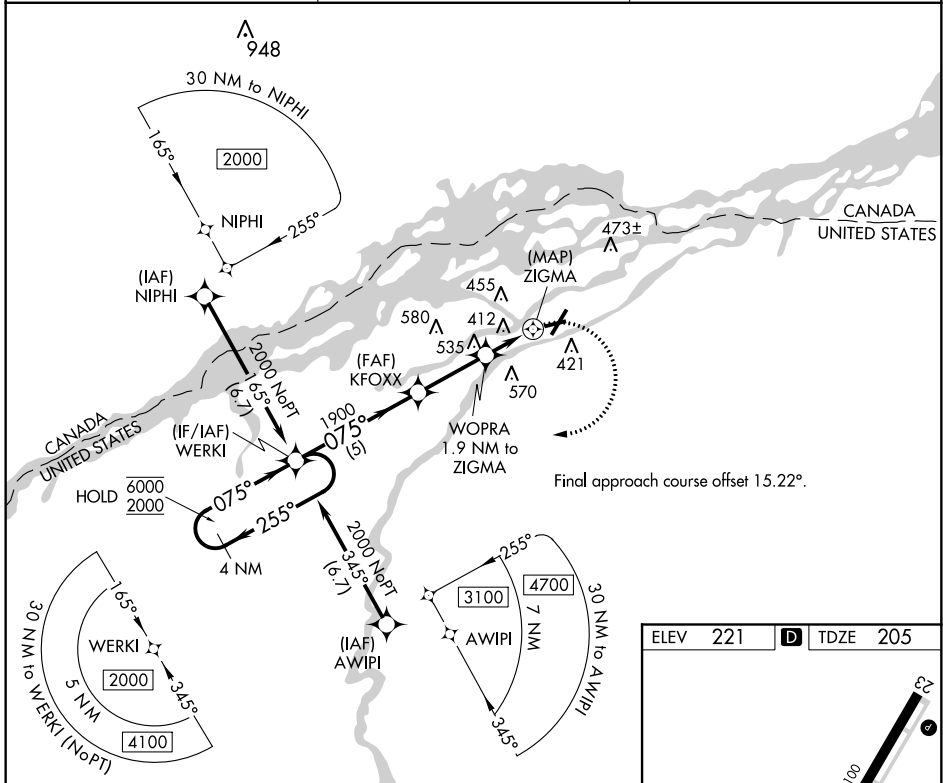
APP CRS	Rwy Idg	3880
075°	TDZE	205
	Apt Elev	221

RNAV (GPS) RWY 9

MASSENA INTL-RICHARDS FLD (MSS)

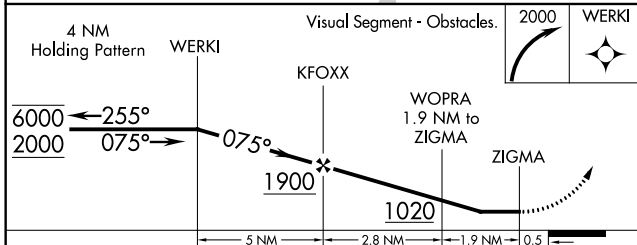
RNP APCH - GPS.		MISSED APPROACH: Climbing right turn to 2000 direct WERKI and hold.
▼	Rwy 9 helicopter visibility reduction below 1 SM NA.	
▲	Straight-in Rwy 9 NA at night, Circling Rwy 9, 23, 27 NA at night.	

ASOS 128.075	BOSTON CENTER 135.25 377.1	UNICOM 123.0 (CTAF) 0
------------------------	--------------------------------------	---------------------------------

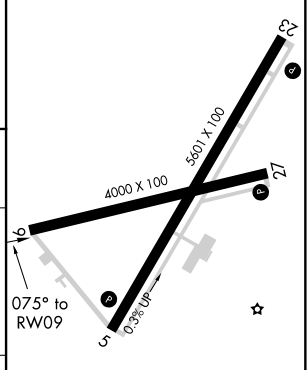


NE-2, 07 OCT 2021 to 04 NOV 2021

NE-2, 07 OCT 2021 to 04 NOV 2021



ELEV	221	D	TDZE	205
------	-----	----------	------	-----



CATEGORY	A	B	C	D
LNVA MDA	680-1	475 (500-1)	680-1 $\frac{3}{8}$	475 (500-1 $\frac{3}{8}$)
C CIRCLING	740-1	519 (600-1)	880-1 $\frac{3}{4}$	880-2
			659 (700-1 $\frac{3}{4}$)	659 (700-2)

- REIL Rwy 5, 9 and 27 **0**
- HIRL Rwy 5-23 **0**
- MIRL Rwy 9-27 **0**