

WAAS CH <b>97615</b> <b>W24A</b>	APP CRS <b>238°</b>	Rwy Idg TDZE Apt Elev	<b>9009</b> <b>1048</b> <b>1051</b>
--	------------------------	-----------------------------	---

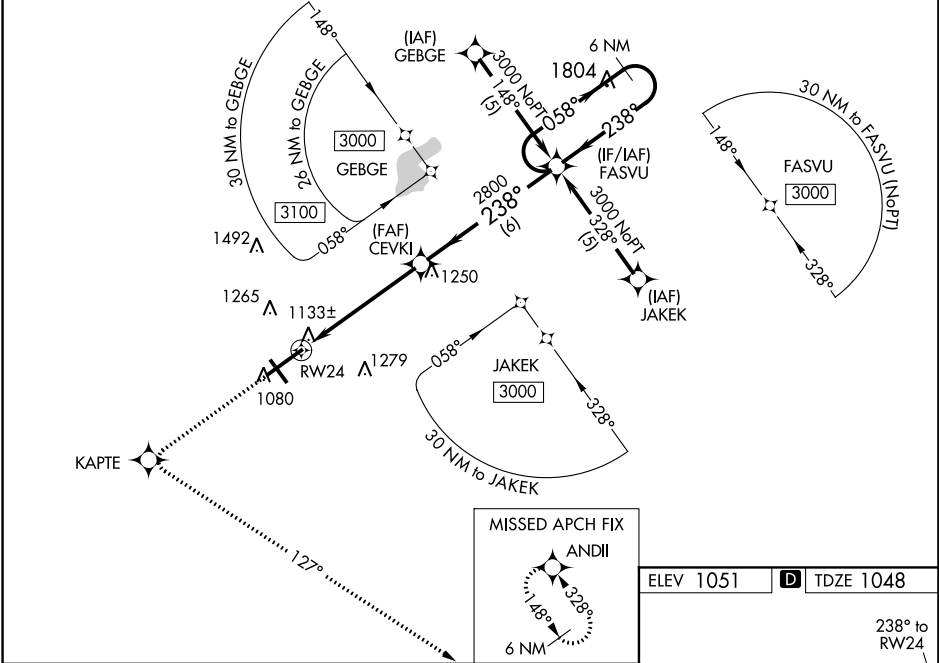
# RNAV (GPS) RWY 24

SPRINGFIELD-BECKLEY MUNI (SGH)

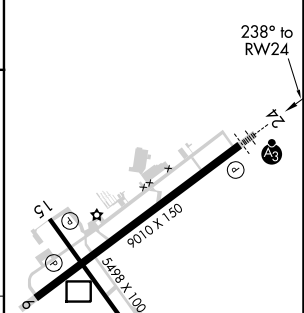
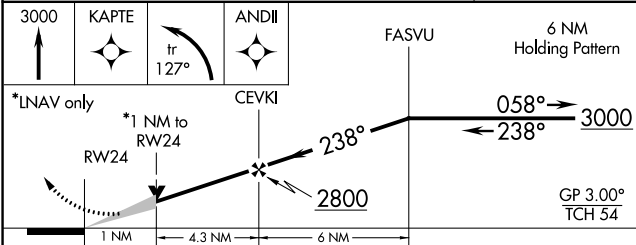
**▼** For uncompensated Baro-VNAV systems, LNAV/VNAV NA below -17°C (2°F) or above 47°C (116°F). DME/DME RNP-0.3 NA. When local altimeter setting not received, use Wright-Patterson AFB altimeter setting and increase all DA 55 feet and all MDA 60 feet, LNAV/VNAV all Cats and LNAV Cat C visibilities ¼ mile. For inoperative ALSF-2/SSALR, increase LNAV Cat D visibility to 1¼ mile. For inoperative ALSF-2/SSALR, when using Wright-Patterson AFB altimeter setting, increase LPV all Cats visibility to 1 mile and LNAV Cat D visibility to 1¼ mile. ALSF-2 reverts to SSALR when tower is closed. VDP and Baro-VNAV NA when using Wright-Patterson AFB altimeter setting.

**SSALR**  
 MISSED APPROACH: Climb to 3000 direct KAPTE and left turn via track 127° to ANDII and hold.

AWOS-3PT <b>134.975</b>	COLUMBUS APP CON <b>118.85 269.275</b>	UNICOM <b>122.95 (CTAF) 0</b>
----------------------------	---	----------------------------------



ELEV 1051	<b>D</b> TDZE 1048
-----------	--------------------



CATEGORY	A	B	C	D
LPV DA		1248-½	200 (200-½)	
LNAV/VNAV DA		1398-¾	350 (400-¾)	
LNAV MDA	1400-½	352 (400-½)		1400-1 352 (400-1)
CIRCLING	1480-1 429 (500-1)	1520-1 469 (500-1)	1520-1½ 469 (500-1½)	1620-2 569 (600-2)

HIRL Rwy 6-24 0  
 MRL Rwy 15-33 0  
 REIL Rwy 6, 15 and 33 0

EC-2, 07 OCT 2021 to 04 NOV 2021

EC-2, 07 OCT 2021 to 04 NOV 2021