

WAAS CH <b>58115</b> <b>W06A</b>	APP CRS <b>058°</b>	Rwy Idg <b>9009</b> TDZE <b>1051</b> Apt Elev <b>1051</b>
--	------------------------	---

# RNAV (GPS) RWY 6

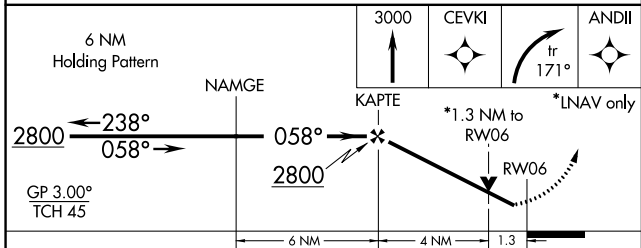
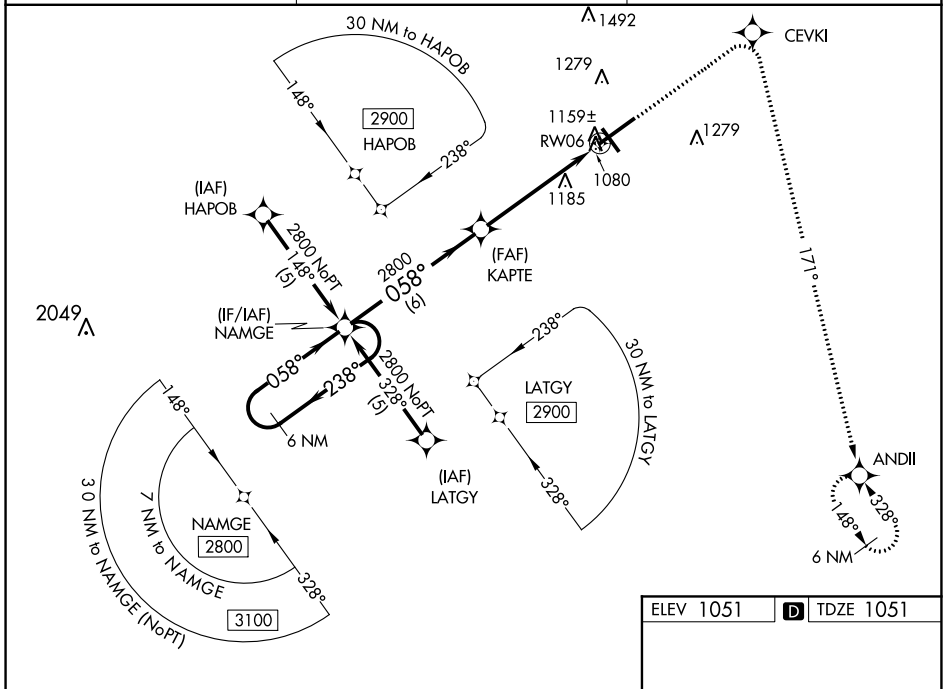
SPRINGFIELD-BECKLEY MUNI (SGH)

**⚠** For uncompensated Baro-VNAV systems, LNAV/VNAV NA below -17°C (2°F) or above 46°C (114°F). DME/DME RNP-0.3 NA. Visibility reduction by helicopters NA.

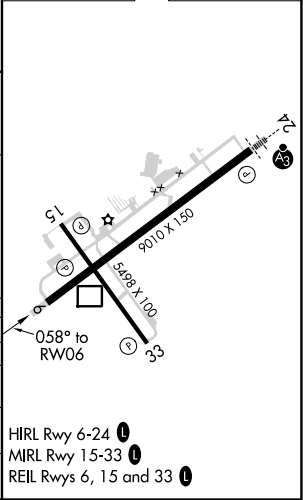
**⚠** When local altimeter setting not received, use Wright-Patterson AFB altimeter setting and increase all DA 55 feet and all MDA 60 feet, and increase LPV all Cats, LNAV/VNAV all Cats, and LNAV Cat C visibilities ¼ mile. VDP and Baro-VNAV NA when using Wright-Patterson AFB altimeter setting.

MISSED APPROACH: Climb to 3000 direct CEVKI and right turn via track 171° to ANDII and hold.

AWOS-3PT <b>134.975</b>	COLUMBUS APP CON <b>118.85 269.275</b>	UNICOM <b>122.95 (CTAF) 1</b>
----------------------------	---	----------------------------------



ELEV 1051	<b>D</b> TDZE 1051
-----------	--------------------



CATEGORY	A	B	C	D
LPV DA	1354-1 303 (400-1)			
LNAV/VNAV DA	1429-1¼ 378 (400-1¼)			
LNAV MDA	1500-1	449 (500-1)	1500-1¼ 449 (500-1¼)	1500-1½ 449 (500-1½)
CIRCLING	1500-1 449 (500-1)	1520-1 469 (500-1)	1520-1½ 469 (500-1½)	1620-2 569 (600-2)

EC-2, 07 OCT 2021 to 04 NOV 2021

EC-2, 07 OCT 2021 to 04 NOV 2021