

WAAS CH <b>72939</b> <b>W04A</b>	APP CRS <b>040°</b>	Rwy Idg <b>5000</b> TDZE <b>447</b> Apt Elev <b>447</b>
--	------------------------	---

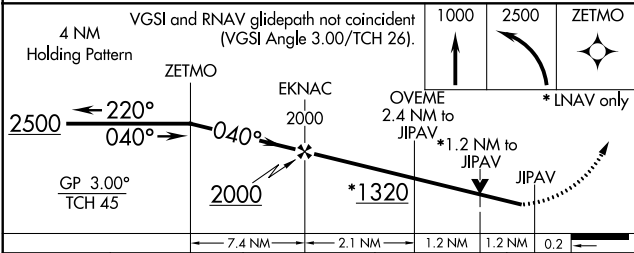
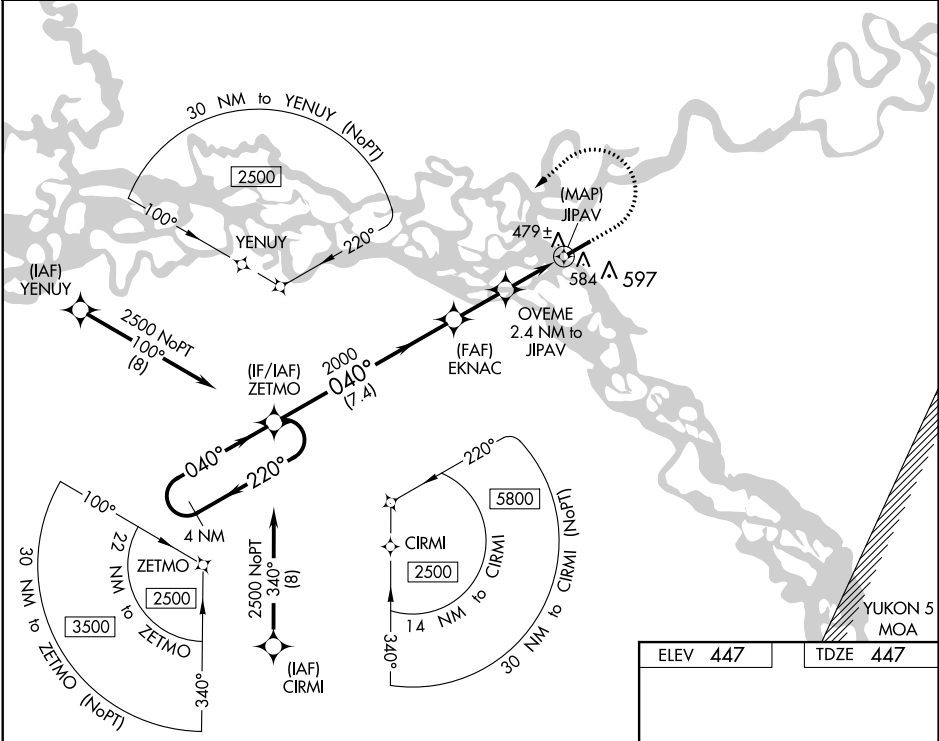
# RNAV (GPS) RWY 4

FORT YUKON (FYU) (PFYU)

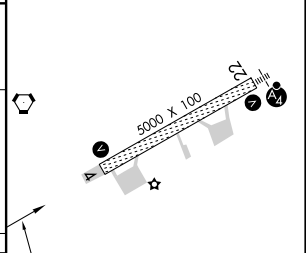
**▼** For uncompensated Baro-VNAV systems, LNAV/VNAV NA below -20° C (-4°F) or above 54°C (130°F), Circling NA southeast of Rwy 4-22. DME/DME RNP-0.3 NA. Rwy 4 helicopter visibility reduction below ¾ SM NA.

MISSED APPROACH: Climb to 1000 then climbing left turn to 2500 direct ZETMO and hold.

AWOS-3P <b>125.8</b>	ANCHORAGE CENTER <b>135.0 225.4</b>	FAIRBANKS RADIO <b>122.05</b>	CTAF <b>122.5</b> <b>①</b>
-------------------------	--	----------------------------------	-------------------------------



ELEV <b>447</b>	TDZE <b>447</b>
-----------------	-----------------



CATEGORY	A	B	C	D
LPV DA		697-1	250 (300-1)	
LNAV/VNAV DA		764-1	317 (400-1)	
LNAV MDA	860-1	413 (500-1)	860-1½	413 (500-1½)
<b>ⓐ</b> CIRCLING	860-1 413 (500-1)	900-1 453 (500-1)	900-1½ 453 (500-1½)	1000-2 553 (600-2)

040° to JIPAV

MRL Rwy 4-22 **①**

AK, 07 OCT 2021 to 02 DEC 2021

AK, 07 OCT 2021 to 02 DEC 2021