

CAPE NEWENHAM, ALASKA

NDB/DME RWY 15

NDB/DME EHM 385 Chan 18 (Y)	APCH CRS 182°	Rwy ldg TDZE 456 Arpt Elev 531
---	-------------------------	---

AL-2235 [USAF]

CAPE NEWENHAM LRRS (PAEH)

<p>▼ Night operations not authorized.</p>	<p>MISSED APPROACH: Climbing right turn to 4500, intercept EHM NDB 002° bearing to ELPEE and hold, continue climb in holding to 4500.</p>
---	---

<p>ANCHORAGE CENTER 124.2 251.1</p>	<p>CAPE NEWENHAM RADIO 126.2</p>
--	---

**MILITARY CERTIFIED
AIRCREWS OR AUTHORIZED
CONTRACT AIRCRAFT
ONLY**

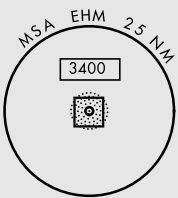
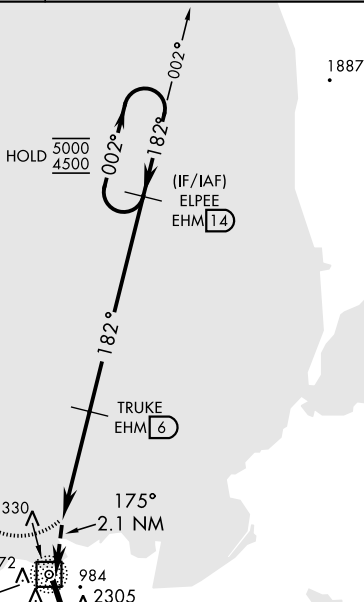
NOT FOR CIVIL USE

CAUTION:

1. Rwy located on slope of 2306' mountain. High terrain both sides and S end of Rwy.
2. Successful go-around improbable if initiated past the MAP.

Uncontrolled Airspace below 700' AGL within 7 NM of Cape Newenham airport.

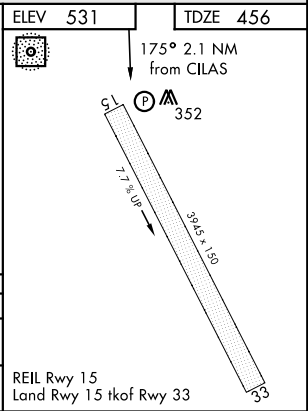
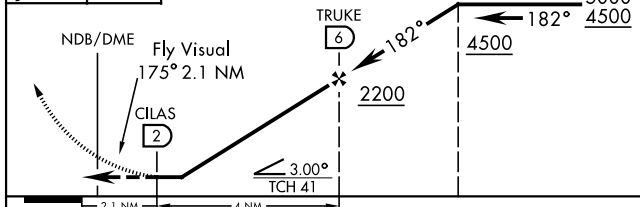
Terrain, 235' MSL, 200' from threshold, 1611' left of course.



CAPE NEWENHAM
385 EHM
Chan 18 (Y)

EMERG SAFE ALT 100 NM 7100

4500 brg 002° ELPEE EHM 14	ELPEE 14 4500 182° 5000 4500	ELEV 531	TDZE 456
----------------------------------	--	----------	----------



CATEGORY	A	B	C	D
S-15	1240-2½	784	(800-2½)	NOT AUTHORIZED
CIRCLING	NOT AUTHORIZED			

REIL Rwy 15
Land Rwy 15 tkof Rwy 33

CAPE NEWENHAM, ALASKA
Amdt 3 12AUG21

58°39'N-162°04'W

CAPE NEWENHAM LRRS (PAEH)

NDB/DME RWY 15

AK, 07 OCT 2021 to 02 DEC 2021

AK, 07 OCT 2021 to 02 DEC 2021