

CAPE NEWENHAM, ALASKA

RNAV (GPS) RWY 15

APCH CRS 172°	Rwy Idg TDZE Arpt Elev	3945 456 531
------------------	------------------------------	--------------------

AL-2235 (USAF)

CAPE NEWENHAM LRRS (PAEH)

	MISSED APPROACH: Climbing right turn to 3500 direct WAGEN and hold.
--	---

ANCHORAGE CENTER
124.2 251.1

RADIO
126.2 (CTAF)

RNP APCH

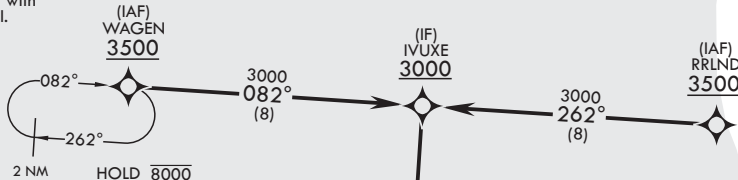
Straight-in Rwy 15 at night, operational VGSI required, remain on or above VGSI glidepath until threshold.

USAF Only: When VGSI inop, straight-in Rwy 15 authorized at night with command approval.

Visibility reduction by helicopters NA.

CAUTION:

1. Rwy located on slope of 2306' mountain. High terrain both sides and S end of rwy.
2. Successful go-around improbable if initiated past the MAP.

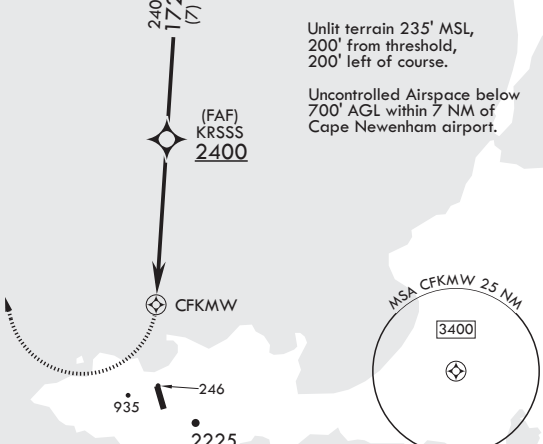


Unlit terrain 235' MSL, 200' from threshold, 200' left of course.

Uncontrolled Airspace below 700' AGL within 7 NM of Cape Newenham airport.

NOT FOR CIVIL USE

MILITARY CERTIFIED AIRCREWS OR AUTHORIZED CONTRACT AIRCRAFT ONLY

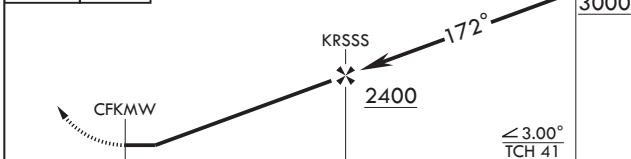


EMERG SAFE ALT 100 NM 7100

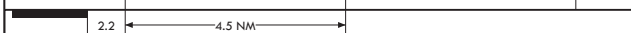
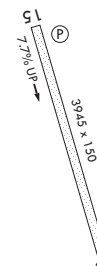


ELEV 531

TDZE 456



172° to CFKMW



Land Rwy 15

Tkof Rwy 33

CATEGORY	A	B	C	D
----------	---	---	---	---

LNVA MDA	1260-3	804	(800-3)	NA
----------	--------	-----	---------	----

CIRCLING	NOT AUTHORIZED			
----------	----------------	--	--	--

REIL Rwy 15

CAPE NEWENHAM, ALASKA

58°39'N - 162°04'W

CAPE NEWENHAM LRRS (PAEH)

Amdt 2 25FEB21

RNAV (GPS) RWY 15

AK, 07 OCT 2021 to 02 DEC 2021

AK, 07 OCT 2021 to 02 DEC 2021