

NDB/DME RWY 2

NDB CZF 275	APCH CRS 048°	Rwy ldg TDZE 444 Arprt Elev 467	AL-2326 [USAF]	CAPE ROMANZOF LRRS (PACZ)
-----------------------	-------------------------	--	----------------	---------------------------

▼ Night operations not authorized.
Visibility reduction by helicopters NA.

† MISSED APPROACH: Climb left turn to 3600 to intercept CZF NDB 228° bearing to MOTRS/12 DME and hold.

ANCHORAGE CENTER 124.5 226.8	UNICOM 126.2 (CTAF)	KENAI RADIO 122.1
--	-------------------------------	-----------------------------

CAUTION:
1. Final Approach Course intersects extended runway centerline 4,520' prior to threshold.
2. Successful go-around improbable if initiated beyond the MAP.

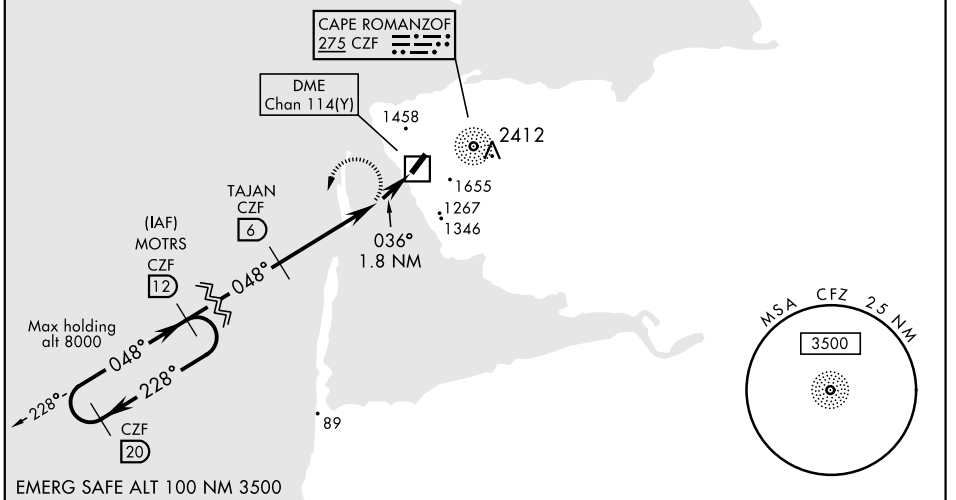
† Missed approach requires use of RNAV or ATC RADAR monitoring.

Uncontrolled Airspace below 700' AGL within 7 NM of Cape Romanzof airport.

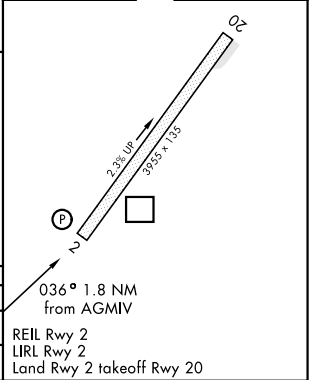
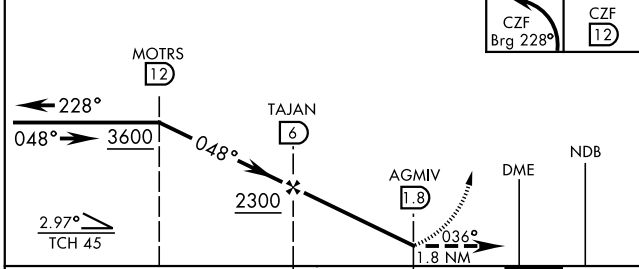
Terrain 384' MSL, 200' from threshold, 1987' left of course.

**MILITARY CERTIFIED
AIRCREWS OR AUTHORIZED
CONTRACT AIRCRAFT ONLY**

NOT FOR CIVIL USE



3600 CZF Brg 228°	MOTRS CZF 12	ELEV 467	TDZE 444
----------------------	--------------	----------	----------



CATEGORY	A	B	C	D
S-2	1580-2½ 1136 (1200-2½)	1580-3 1136 (1200-3)		
CIRCLING	1780-2½ 1313 (1400-2½)	1780-3 1313 (1400-3)		

NDB/DME RWY 2

AK, 07 OCT 2021 to 02 DEC 2021

AK, 07 OCT 2021 to 02 DEC 2021