

CAPE ROMANZOF, ALASKA

RNAV (GPS)-A

APCH CRS 018°	Rwy Idg TDZE Arprt Elev	N/A N/A 467
-------------------------	-------------------------------	--

AL-2326 (USAF)

CAPE ROMANZOF LRRS (PACZ)

▼ * Circling NA East of Rwy 2-20.

MISSED APPROACH: Climbing left turn to 3000 direct HAGEL and hold.

ANCHORAGE CENTER
124.5 226.8

CTAF
126.2

KENAI RADIO
122.1

DME/DME RNP - 0.3 NA

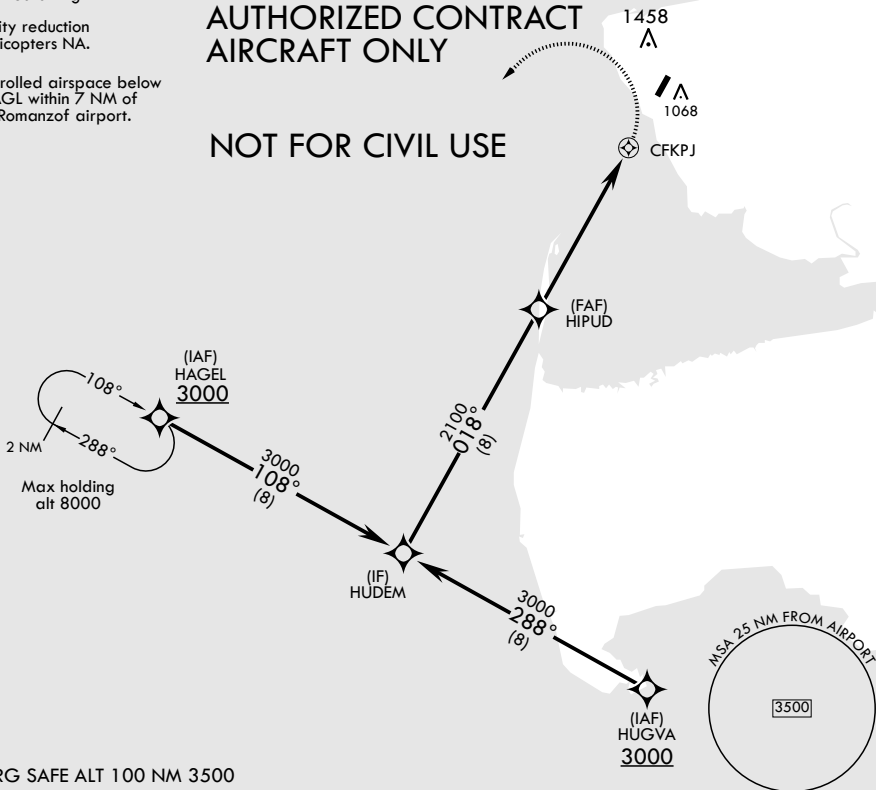
Procedure not authorized at night.

Visibility reduction by helicopters NA.

Uncontrolled airspace below 700' AGL within 7 NM of Cape Romanzof airport.

MILITARY CERTIFIED AIRCREW OR AUTHORIZED CONTRACT AIRCRAFT ONLY

NOT FOR CIVIL USE



EMERG SAFE ALT 100 NM 3500

<p>HUDEM 3000</p> <p>HIPUD 2100</p> <p>CFKPJ</p> <p>5.3 NM</p>	<p>3000</p> <p>HAGEL ELEV 467</p>											
<table border="1"> <thead> <tr> <th>CATEGORY</th> <th>A</th> <th>B</th> <th>C</th> <th>D</th> </tr> </thead> <tbody> <tr> <td>C CIRCLING*</td> <td>1780-2 1313 (1400-2)</td> <td>1780-3 1313 (1400-3)</td> <td></td> <td></td> </tr> </tbody> </table>	CATEGORY	A	B	C	D	C CIRCLING*	1780-2 1313 (1400-2)	1780-3 1313 (1400-3)			<p>LRRS (PACZ) REIL Rwy 2</p>	
CATEGORY	A	B	C	D								
C CIRCLING*	1780-2 1313 (1400-2)	1780-3 1313 (1400-3)										

CAPE ROMANZOF, ALASKA

61°47'N - 166°02'W

CAPE ROMANZOF LRRS (PACZ)

Orig 05DEC19

RNAV (GPS)-A

AK, 07 OCT 2021 to 02 DEC 2021

AK, 07 OCT 2021 to 02 DEC 2021