

CAPE LISBURNE SIX RWY 9 DEPARTURE (OBSTACLE) (LUR6•PHO)

ANCHORAGE CENTER APP/DEP CON
119.65 363.25
CAPE LISBURNE RADIO
126.2 (CTAF)

SL-2327 [USAF]

MILITARY CERTIFIED
AIRCRAFTS OR AUTHORIZED
CONTRACT AIRCRAFT
ONLY

NOT FOR CIVIL USE

CAUTION:
Do not exceed 220 KIAS until
intercepting LUR 014°.

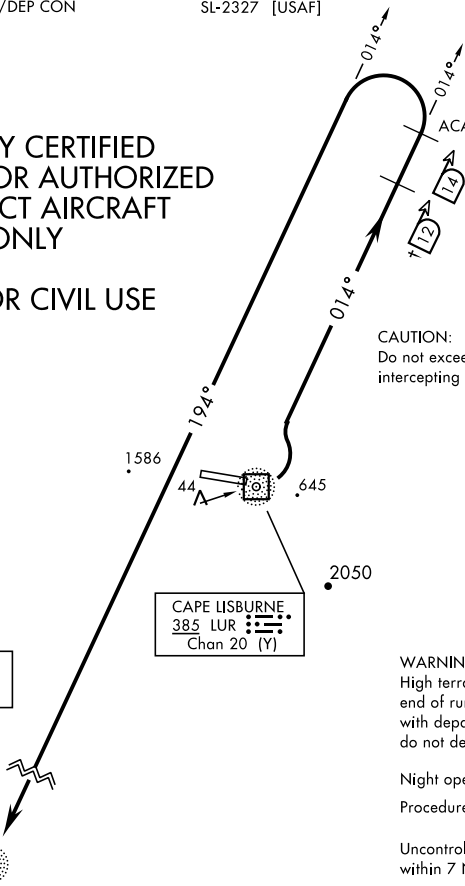
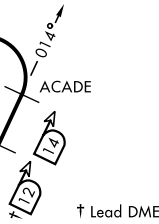
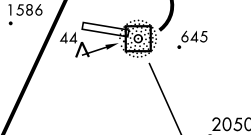
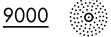
WARNING:
High terrain within 2 NM of departure
end of runway requiring prompt compliance
with departure procedure instructions;
do not delay start of initial turn.

Night operations not authorized.
Procedure NA for CAT E aircraft.

Uncontrolled Airspace below 700' AGL
within 7 NM of Cape Lisburne airport.

AK, 07 OCT 2021 to 02 DEC 2021

AK, 07 OCT 2021 to 02 DEC 2021



DEPARTURE ROUTE DESCRIPTION

TAKE-OFF RWY 9: Turn left within 1/2 mile from departure end of runway and intercept LUR NDB 014° outbound to ACADE. At ACADE, turn left, join PHO NDB 014° bearing inbound to PHO. Cross PHO at or above 9000, or routing/altitude as assigned by ATC.

TAKE-OFF RWY 27: NOT AUTHORIZED