

NDB/DME LUR 385 Chan 20 (Y)	APCH CRS 230°	Rwy Ldg THRE 4800 N/A Arprt Elev 14
---	-------------------------	---

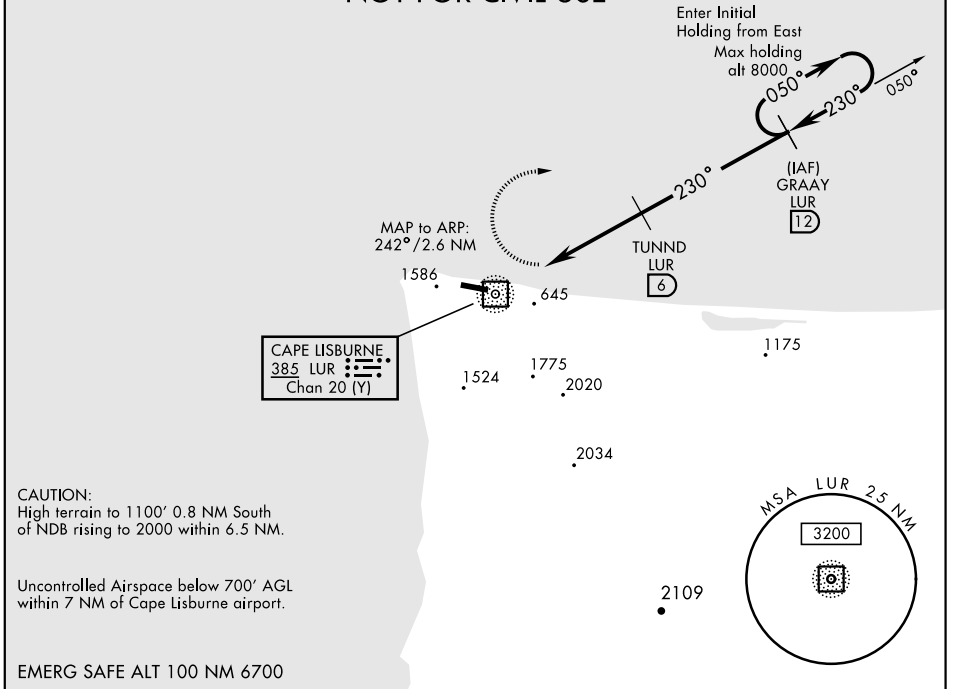
[USAF] AL-2327

CAPE LISBURNE LRRS (PALU)

<p>▼ * Circling not authorized S of Rwy 8-26. Night operations not authorized.</p>	<p>MISSED APPROACH: Climbing right turn to 3200, intercept LUR 050° bearing to GRAAY and hold.</p>
--	--

<p>ANCHORAGE CENTER APP/DEP CON 119.65 363.25</p>	<p>CAPE LISBURNE RADIO 0 126.2 (CTAF)</p>
--	---

**MILITARY CERTIFIED
AIRCREWS OR AUTHORIZED
CONTRACT AIRCRAFT ONLY
NOT FOR CIVIL USE**



<p>3200 LUR 050°</p> <p>GRAAY LUR 12</p>	<p>ELEV 14</p>			
<p>REIL Rwy 09-27 HIRL Rwy 09-27 TDZL Rwy 09-27</p>				
CATEGORY	A	B	C	D
CIRCLING*		1320-3	1306	(1400-3)

AK, 07 OCT 2021 to 02 DEC 2021

AK, 07 OCT 2021 to 02 DEC 2021