

# RNAV (GPS) RWY 27

APCH CRS	Rwy ldg	4800
254°	THRE	14
	Arpt Elev	14

[USAF] AL-2327

CAPE LISBURNE LRSS (PALU)

\* Circling not authorized south of runway 9-27  
 DME/DME RNP -0.3 NA  
 Night operations not authorized.

MISSED APPROACH: Climbing right turn to 3200 direct  
 TAKME and hold.

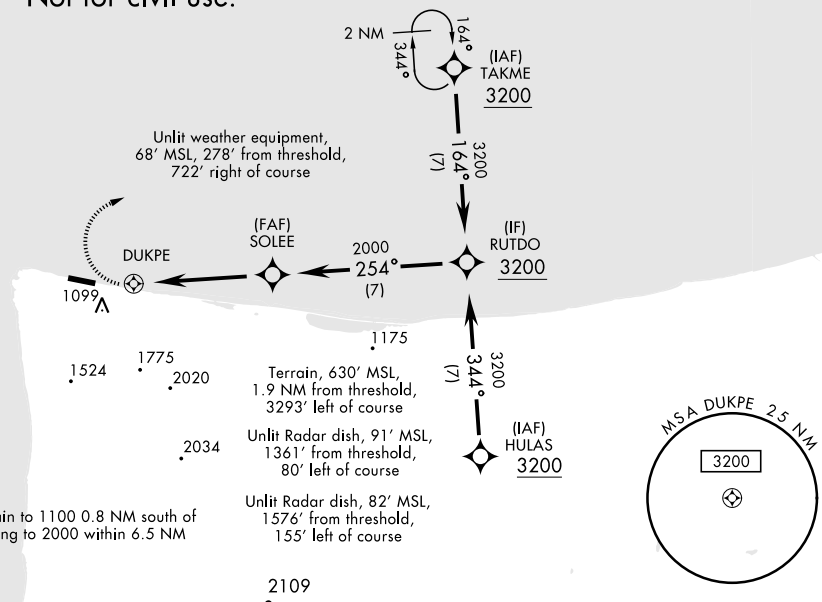
ANCHORAGE CENTER APP/DEP CON  
**119.65 363.25**

CAPE LISBURNE RADIO **0**  
**126.2 (CTAF)**

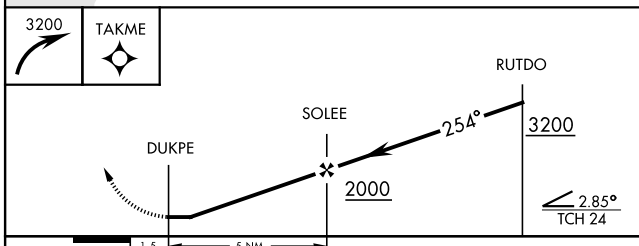
**Military Certified Aircrew or  
 Authorized Contract Aircraft only.**  
**Not for civil use.**

Grid courses are True Polar courses and  
 convergence angle factor shall not be applied

Uncontrolled Airspace below 700' AGL  
 within 7 NM of Cape Lisburne airport



EMERG SAFE ALT 100 NM 6700 FROM DUKPE



ELEV	14	THRE	14
------	----	------	----

CATEGORY	A	B	C	D
LNAV MDA	1220-1¾	1206 (1300-1¾)	1220-3 1206 (1300-3)	NOT AUTHORIZED
CIRCLING*	1320-1¾	1306 (1400-1¾)	1320-3 1306 (1400-3)	NOT AUTHORIZED

REIL Rwy 09-27  
 HIRL Rwy 09-27 **0**  
 TDZL Rwy 09-27 **0**

# RNAV (GPS) RWY 27

AK, 07 OCT 2021 to 02 DEC 2021

AK, 07 OCT 2021 to 02 DEC 2021