

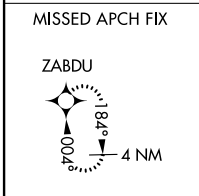
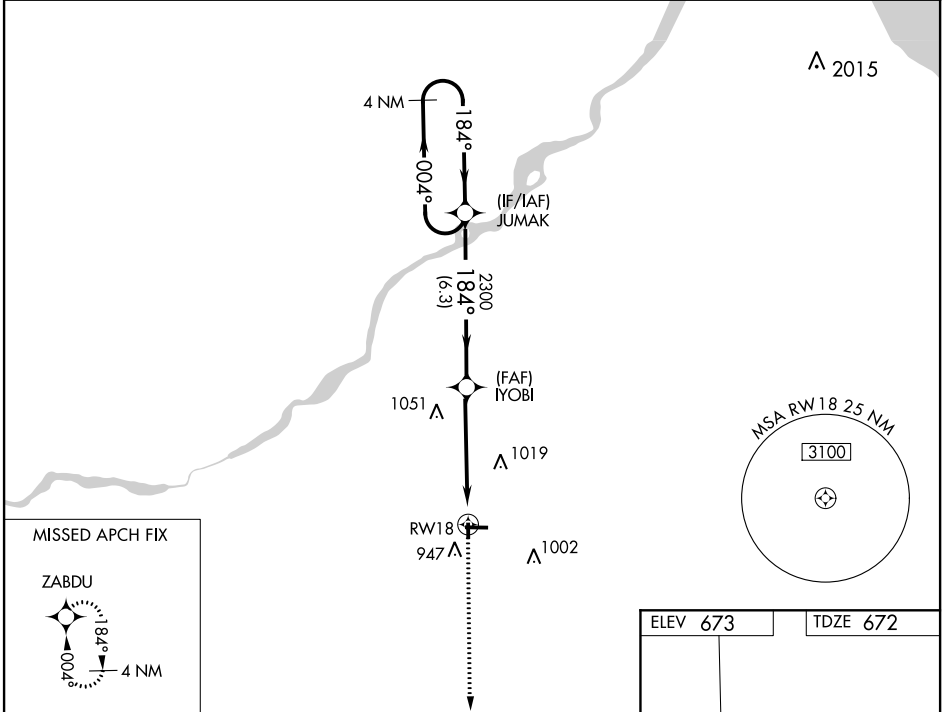
WAAS CH 97403 W18A	APP CRS 184°	Rwy Idg 2628 TDZE 672 Apt Elev 673
--	------------------------	---

RNAV (GPS) RWY 18

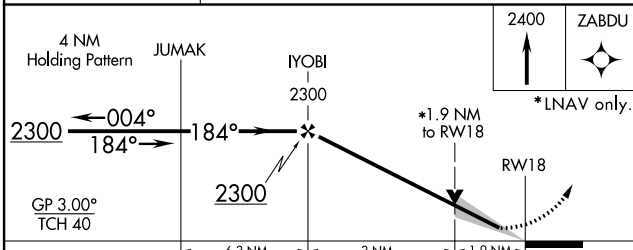
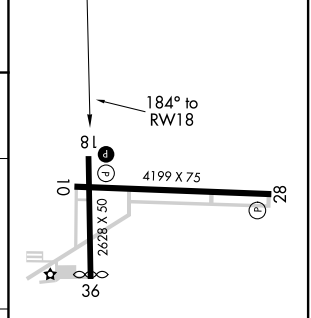
WOOD COUNTY (1G~~/~~)

RNP APCH.	<p>▽ Circling Rwy 36 NA at night. VDP NA when using Toledo Express altimeter setting. ▲ NA When local altimeter setting not received, use Toledo Express altimeter setting and increase DA to 957 feet; increase all MDAs 40 feet.</p>	MISSED APPROACH: Climb to 2400 direct ZABDU and hold.
-----------	---	---

AWOS-3 120.725	TOLEDO APP CON 126.1 317.55	CLNC DEL 125.6	UNICOM 122.975 (CTAF) 0
--------------------------	---------------------------------------	--------------------------	--



ELEV 673	TDZE 672
----------	----------



CATEGORY	A	B	C	D
LPV DA	922-1	250 (300-1)		NA
LNAV MDA	1320-1	648 (700-1)		NA
C CIRCLING	1320-1	647 (700-1)		NA

REIL Rwys 10, 18 and 28 **0**
 MRL Rwys 10-28 and 18-36 **0**

EC-2, 07 OCT 2021 to 04 NOV 2021

EC-2, 07 OCT 2021 to 04 NOV 2021