

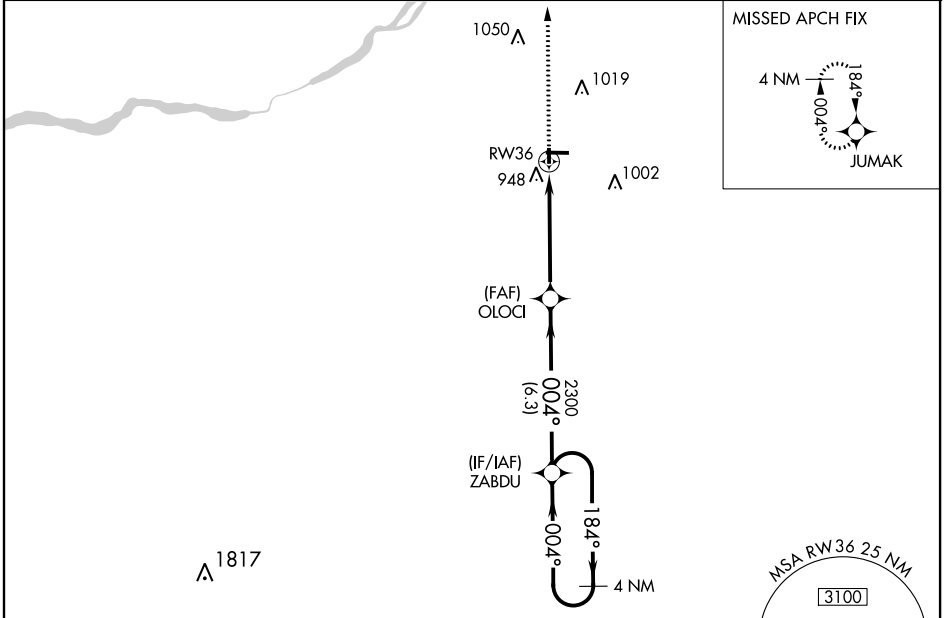
APP CRS	Rwy Idg	<b>2560</b>
<b>004°</b>	TDZE	<b>672</b>
	Apt Elev	<b>673</b>

# RNAV (GPS) RWY 36

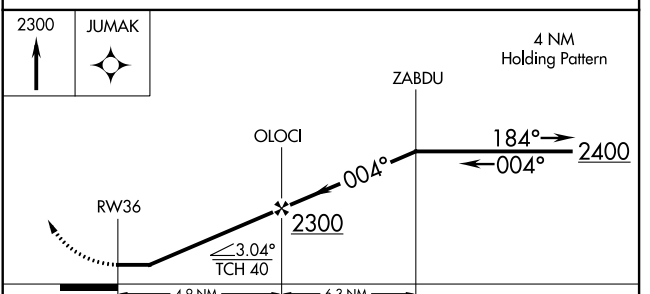
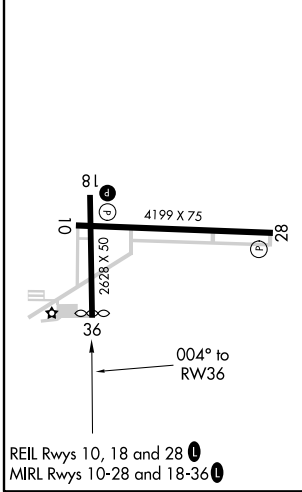
WOOD COUNTY (1G $\emptyset$ )

RNP APCH.	MISSED APPROACH: Climb to 2300 direct JUMAK and hold.
<p><b>∇</b> Rwy 36 helicopter visibility reduction below 1 SM NA. When local altimeter setting not received, use Toledo Express altimeter setting and increase all MDAs 40 feet. Straight-in and Circling Rwy 36 NA at night.</p> <p><b>△</b> NA</p>	

AWOS-3 <b>120.725</b>	TOLEDO APP CON <b>126.1 317.55</b>	CLNC DEL <b>125.6</b>	UNICOM <b>122.975 (CTAF)</b> <b>①</b>
--------------------------	---------------------------------------	--------------------------	--



ELEV 673	TDZE 672
----------	----------



CATEGORY	A	B	C	D
LNAV MDA	1260-1	588 (600-1)	NA	
<b>C</b> CIRCLING	1300-1	627 (700-1)	NA	

EC-2, 07 OCT 2021 to 04 NOV 2021

EC-2, 07 OCT 2021 to 04 NOV 2021