

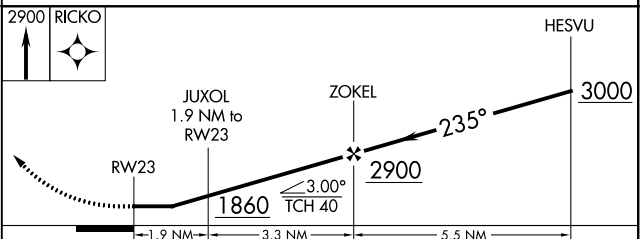
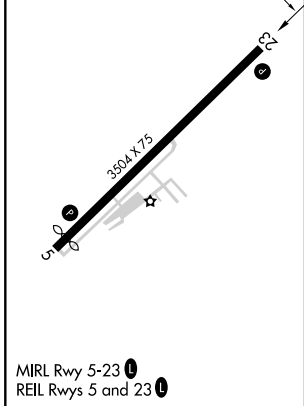
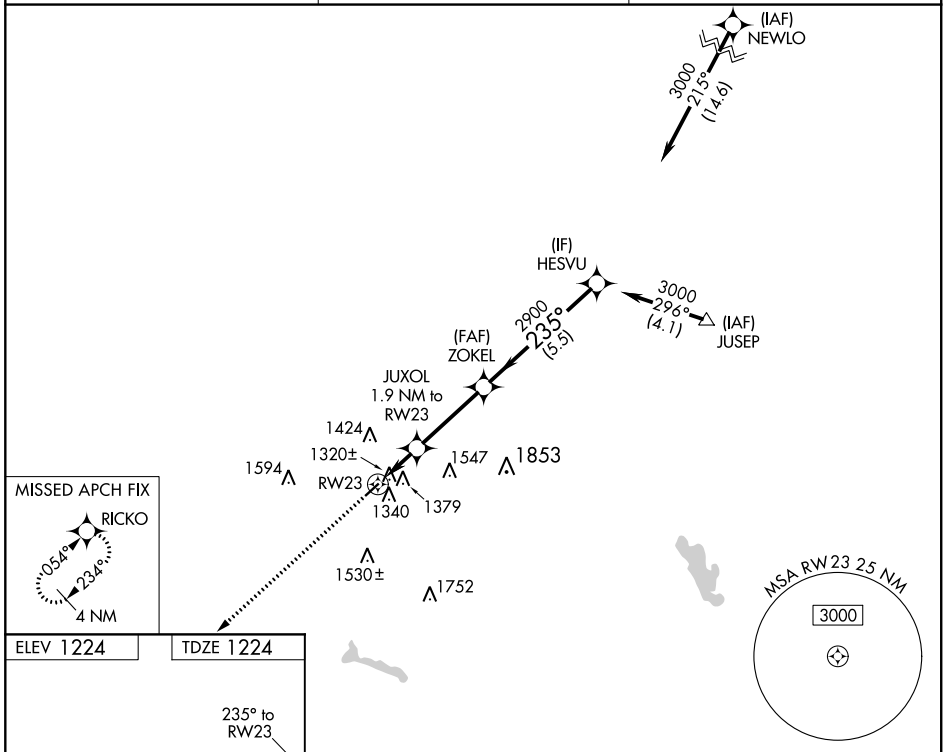
WAAS CH <b>57923</b> <b>W23A</b>	APP CRS <b>235°</b>	Rwy Idg TDZE Apt Elev	<b>3504</b> <b>1224</b> <b>1224</b>
--	------------------------	-----------------------------	---

# RNAV (GPS) RWY 23

GALLION MUNI (GQQ)

<p><b>NA</b> Helicopter visibility reduction below <math>\frac{3}{4}</math> SM NA. DME/DME RNP-0.3 NA. Use Mansfield altimeter setting. Circling Rwy 5 NA at night.</p>	<p>MISSED APPROACH: Climb to 2900 direct RICKO and hold.</p>
---	--

<p>CLEVELAND APP CON ★ <b>124.2 360.65</b></p>	<p>CLNC DEL <b>126.8</b></p>	<p>UNICOM <b>122.8 (CTAF) 1</b></p>
--	----------------------------------	---



CATEGORY	A	B	C	D
LP MDA	1620-1	396 (400-1)	1620-1 $\frac{1}{8}$ 396 (400-1 $\frac{1}{8}$ )	NA
LNAV MDA	1760-1	536 (600-1)	1760-1 $\frac{1}{8}$ 536 (600-1 $\frac{1}{8}$ )	NA
CIRCLING	1800-1 576 (600-1)	1960-1 736 (800-1)	1960-2 736 (800-2)	NA

EC-2, 07 OCT 2021 to 04 NOV 2021

EC-2, 07 OCT 2021 to 04 NOV 2021