

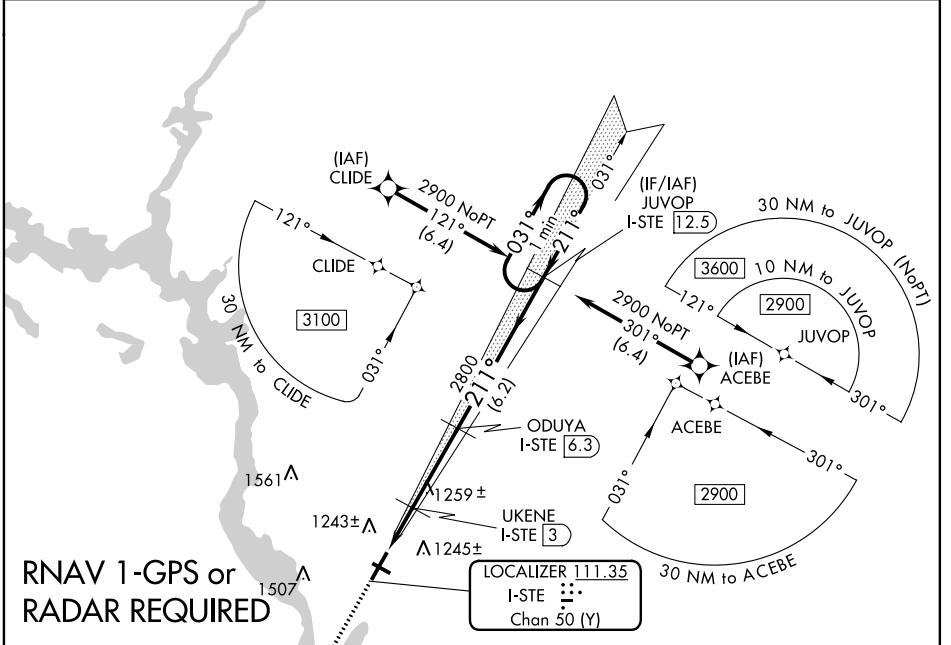
LOC/DME I-STE	APP CRS	Rwy Idg	6028
111.35	211°	TDZE	1110
Chan 50(Y)		Apt Elev	1110

ILS or LOC RWY 21

STEVENS POINT MUNI (STE)

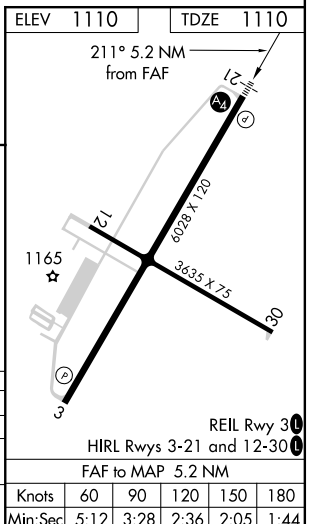
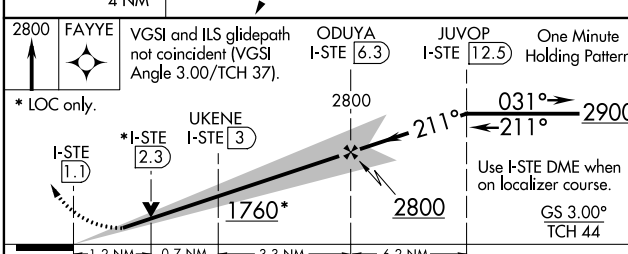
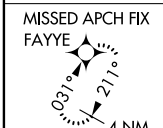
<p>▽ DME required. RNAV 1-GPS required. For inoperative ALS, increase S-LOC 21 Cat C/D visibility to 1/8 SM. Inoperative table does not apply to S-ILS 21 all Cats.</p> <p>▲ NA</p>	<p>MALS </p> <p>MISSED APPROACH: Climb to 2800 direct FAYYE and hold.</p>
---	--

AWOS-3 119.275	MINNEAPOLIS CENTER 124.4 317.7	UNICOM 122.7 (CTAF) 0
--------------------------	--	---------------------------------



EC-3, 07 OCT 2021 to 04 NOV 2021

EC-3, 07 OCT 2021 to 04 NOV 2021



CATEGORY	A	B	C	D
S-ILS 21		1360-3/4	250 (300-3/4)	
S-LOC 21	1520-3/4	410 (500-3/4)	1520-1	410 (500-1)
C CIRCLING	1580-1 470 (500-1)	1600-1 490 (500-1)	1820-2 710 (800-2)	1820-2 1/4 710 (800-2 1/4)

ELEV	1110	TDZE	1110		
211° 5.2 NM from FAF					
REIL Rwy 30					
HIRL Rwy 3-21 and 12-30					
FAF to MAP 5.2 NM					
Knots	60	90	120	150	180
Min:Sec	5:12	3:28	2:36	2:05	1:44