

APP CRS	Rwy Idg	3635
121°	TDZE	1108
	Apt Elev	1110

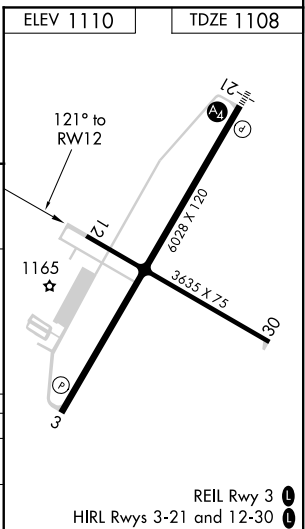
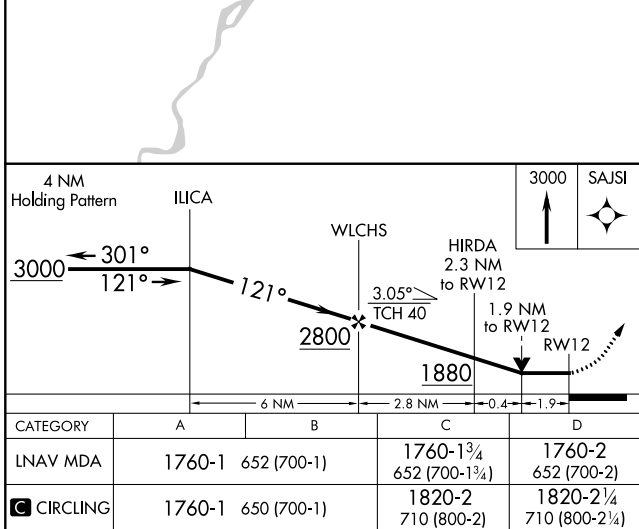
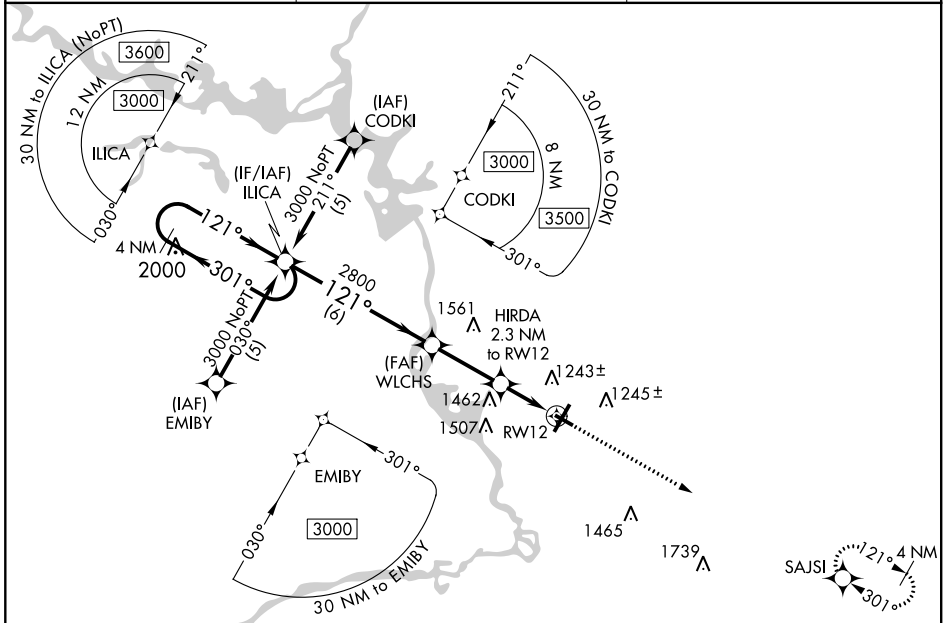
RNAV (GPS) RWY 12

STEVENS POINT MUNI (STE)

⚠ DME/DME RNP-0.3 NA. Rwy 12 helicopter visibility reduction below ¼ SM NA. When local altimeter setting not received, use Mosinee altimeter setting and increase all MDA 60 feet, increase LNAV Cat C and D visibility ¼ mile and Circling Cat C and D visibility ½ mile. VDP NA when using Mosinee altimeter setting.

MISSED APPROACH: Climb to 3000 direct SAJSI and hold.

AWOS-3 119.275	MINNEAPOLIS CENTER 124.4 317.7	UNICOM 122.7 (CTAF) 0
--------------------------	--	---------------------------------



CATEGORY	A	B	C	D
LNAV MDA	1760-1	652 (700-1)	1760-1¾ 652 (700-1¾)	1760-2 652 (700-2)
C CIRCLING	1760-1	650 (700-1)	1820-2 710 (800-2)	1820-2¼ 710 (800-2¼)

REIL Rwy 3 0
HIRL Rwy 3-21 and 12-30 0

EC-3, 07 OCT 2021 to 04 NOV 2021

EC-3, 07 OCT 2021 to 04 NOV 2021