

WAAS CH <b>86511</b> <b>W21A</b>	APP CRS <b>211°</b>	Rwy Idg TDZE Apt Elev	<b>6028</b> <b>1110</b> <b>1110</b>
--	------------------------	-----------------------------	---

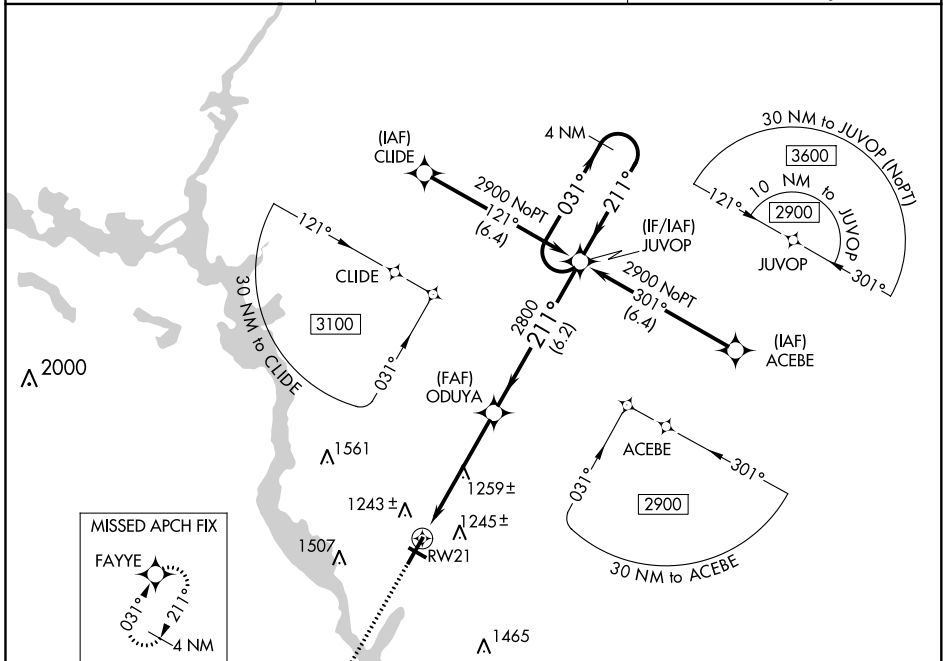
# RNAV (GPS) RWY 21

STEVENS POINT MUNI (STE)

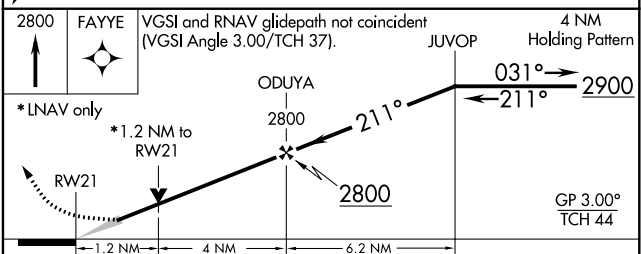
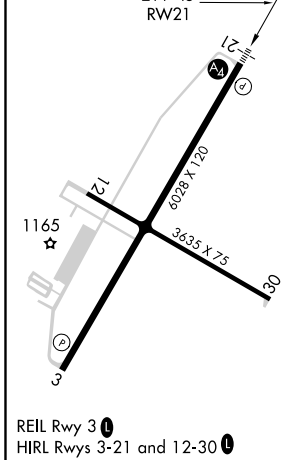
**⚠** For uncompensated Baro-VNAV systems, LNAV/VNAV NA below -17°C (2°F) or above 54°C (130°F). DME/DME RNP-0.3 NA. Inoperative table does not apply to LPV all Cats. For inoperative ALS, increase LNAV Cat C and D visibility to 1½ SM.

**MALS** **MISSED APPROACH:** Climb to 2800 direct FAYYE and hold.

AWOS-3 <b>119.275</b>	MINNEAPOLIS CENTER <b>124.4 317.7</b>	UNICOM <b>122.7 (CTAF)</b>
--------------------------	--	-------------------------------



ELEV 1110	TDZE 1110
-----------	-----------



CATEGORY	A	B	C	D
LPV DA		1360-¾	250 (300-¾)	
LNAV/VNAV DA		1457-7/8	347 (400-7/8)	
LNAV MDA	1520-¾	410 (500-¾)	1520-1	410 (500-1)
<b>C</b> CIRCLING	1580-1 470 (500-1)	1600-1 490 (500-1)	1820-2 710 (800-2)	1820-2½ 710 (800-2½)

EC-3, 07 OCT 2021 to 04 NOV 2021

EC-3, 07 OCT 2021 to 04 NOV 2021