

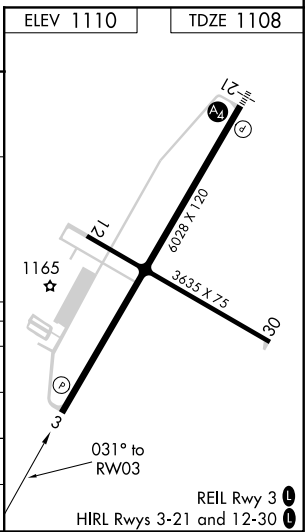
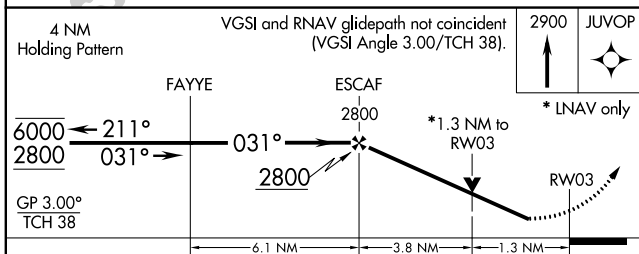
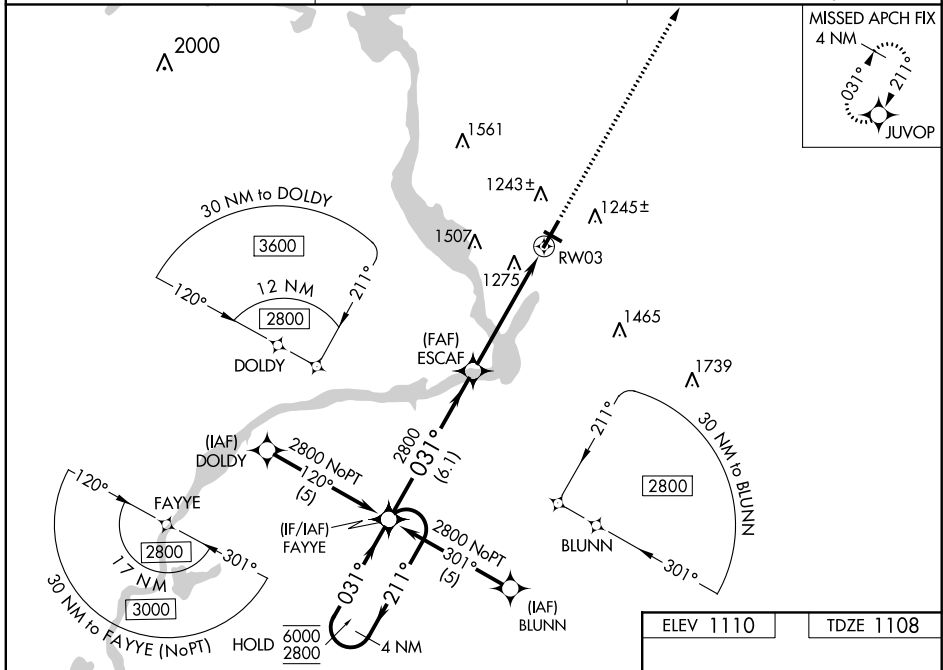
WAAS CH <b>77910</b> <b>W03A</b>	APP CRS <b>031°</b>	Rwy Idg TDZE Apt Elev	<b>6028</b> <b>1108</b> <b>1110</b>
--	------------------------	-----------------------------	---

# RNAV (GPS) RWY 3

STEVENS POINT MUNI (STE)

RNP APCH.	MISSED APPROACH: Climb to 2900 direct JUVOP and hold.
<p><b>▼</b> Rwy 3 helicopter visibility reduction below 3/4 SM NA.</p> <p><b>▲</b> For uncompensated Baro-VNAV systems, LNAV/VNAV NA below -17° C or above 54°C.</p>	

AWOS-3 <b>119.275</b>	MINNEAPOLIS CENTER <b>124.4 317.7</b>	UNICOM <b>122.7 (CTAF) 0</b>
--------------------------	--	---------------------------------



CATEGORY	A	B	C	D
LPV DA		1409-1	301 (300-1)	
LNAV/VNAV DA		1594-1 3/4	486 (500-1 3/4)	
LNAV MDA	1540-1	432 (500-1)	1540-1 1/4 432 (500-1 1/4)	1540-1 1/2 432 (500-1 1/2)
<b>C</b> CIRCLING	1580-1 470 (500-1)	1600-1 490 (500-1)	1820-2 710 (800-2)	1820-2 1/4 710 (700-2 1/4)

EC-3, 07 OCT 2021 to 04 NOV 2021

EC-3, 07 OCT 2021 to 04 NOV 2021

REIL Rwy 3  
HIRL Rws 3-21 and 12-30