

LOC/DME I-MKL 109.1 Chan 28	APP CRS 023°	Rwy Idg 6005 TDZE 434 Apt Elev 434
---	------------------------	---

ILS or LOC RWY 2

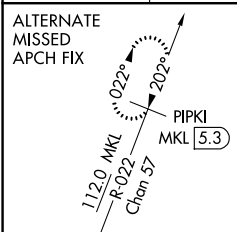
MC KELLAR-SIPES RGNL (MKL)

⚠ Circling Rwy 29 NA at night. Autopilot coupled approach NA below 1100. ADF required. For inop ALS, increase S-LOC 2 and WUTOT fix minimums Cats C/D visibility $\frac{3}{8}$ SM.

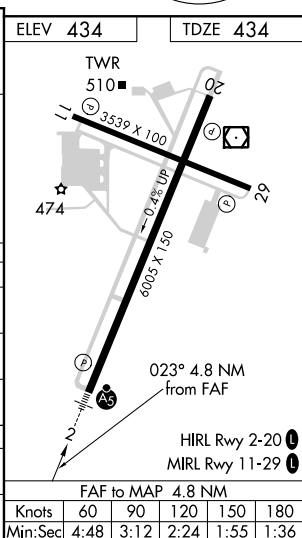
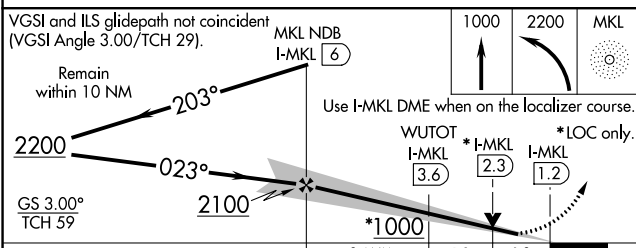
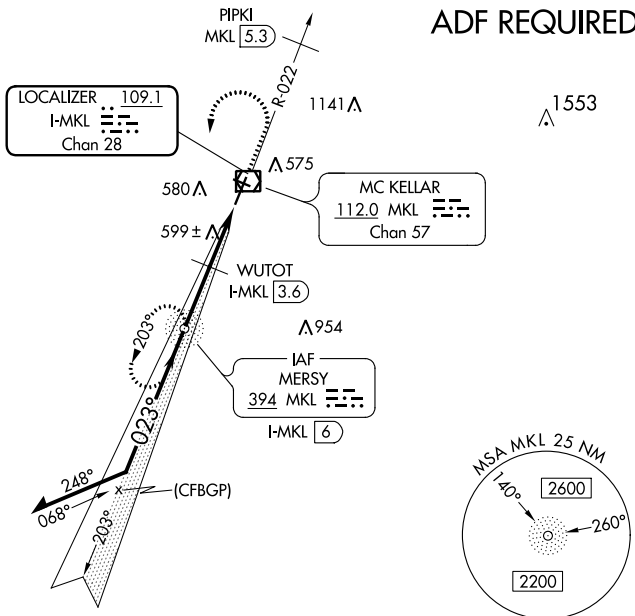
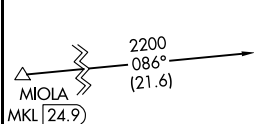


MISSED APPROACH: Climb to 1000 then climbing left turn to 2200 direct MKL NDB and hold.

ASOS 119.325	MEMPHIS CENTER 134.65 316.15	JACKSON TOWER ★ 127.15 (CTAF) 0 249.95	GND CON 120.9	UNICOM 122.95
------------------------	--	--	-------------------------	-------------------------



ADF REQUIRED



CATEGORY	A	B	C	D
S-ILS 2	634- $\frac{1}{2}$ 200 (200- $\frac{1}{2}$)			
S-LOC 2	1000- $\frac{1}{2}$	566 (600- $\frac{1}{2}$)	1000-1 $\frac{1}{4}$	566 (600-1 $\frac{1}{4}$)
C CIRCLING	1000-1	566 (600-1)	1000-1 $\frac{5}{8}$ 566 (600-1 $\frac{5}{8}$)	1080-2 646 (700-2)
WUTOT FIX MINIMUMS				
S-LOC 2	840- $\frac{1}{2}$	406 (500- $\frac{1}{2}$)	840- $\frac{3}{4}$	406 (500- $\frac{3}{4}$)
C CIRCLING	900-1 466 (500-1)	920-1 486 (500-1)	960-1 $\frac{1}{2}$ 526 (600- $\frac{1}{2}$)	1080-2 646 (700-2)

SE-1, 07 OCT 2021 to 04 NOV 2021

SE-1, 07 OCT 2021 to 04 NOV 2021