

WAAS CH 93511 W02A	APP CRS 023°	Rwy Idg 6005 TDZE 434 Apt Elev 434
--	------------------------	---

RNAV (GPS) RWY 2

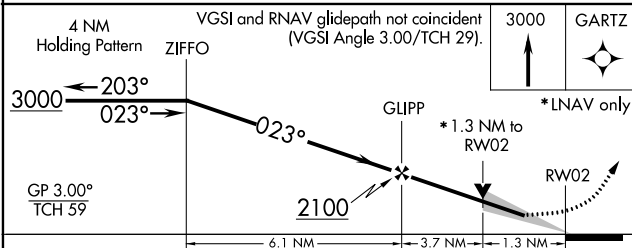
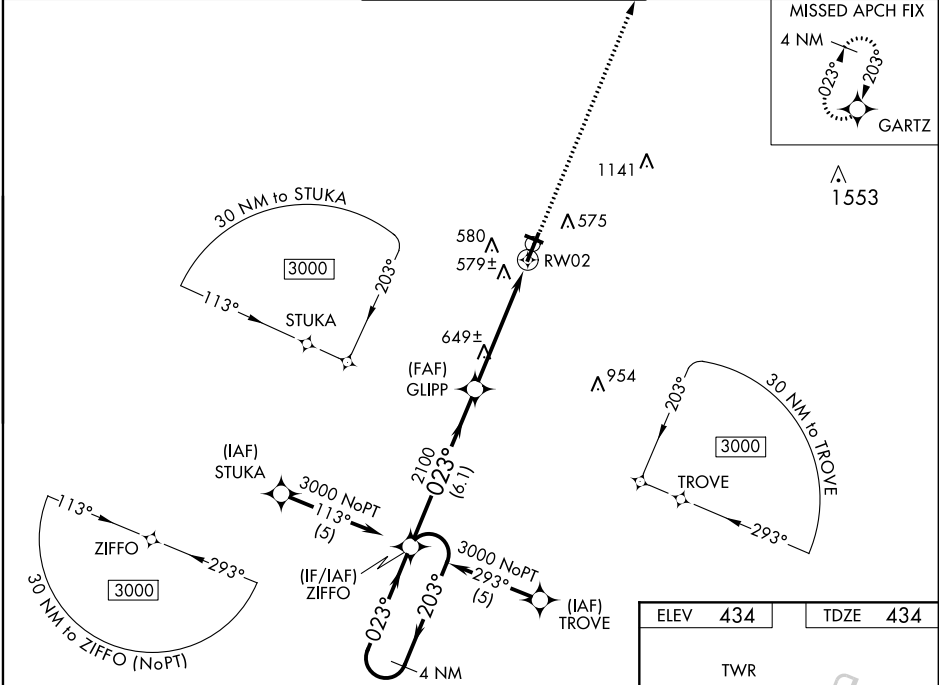
MC KELLAR-SIPES RGNL (MKL)

⚠ For uncompensated Baro-VNAV systems, LNAV/VNAV NA below -15°C (5°F) or above 48°C (118°F). DME/DME RNP-0.3 NA. When local altimeter setting not received, use Dyersburg altimeter setting and increase all DA 92 feet and all MDA 100 feet; increase LNAV/VNAV all Cats visibility ½ mile, and LNAV Cat C and D visibility ¼ mile. For inoperative MALS/R when using Dyersburg altimeter setting, increase LPV all Cats visibility to 1 mile. VDP and Baro-VNAV NA when using Dyersburg altimeter setting. Night Landing: Rwy 29 NA.

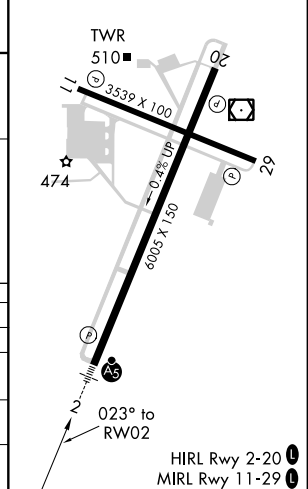


MISSED APPROACH:
Climb to 3000 direct GARTZ and hold.

ASOS 119.325	MEMPHIS CENTER 134.65 316.15	JACKSON TOWER ★ 127.15 (CTAF) 249.95	GND CON 120.9	UNICOM 122.95
------------------------	--	--	-------------------------	-------------------------



ELEV 434	TDZE 434
----------	----------



CATEGORY	A	B	C	D
LPV DA	634-½		200 (200-½)	
LNAV/VNAV DA	887-1		453 (500-1)	
LNAV MDA	900-½ 466 (500-½)		900-¾ 466 (500-¾)	
CIRCLING	900-1 466 (500-1)		900-1 466 (500-1) 1000-2 566 (600-2)	

SE-1, 07 OCT 2021 to 04 NOV 2021

SE-1, 07 OCT 2021 to 04 NOV 2021