

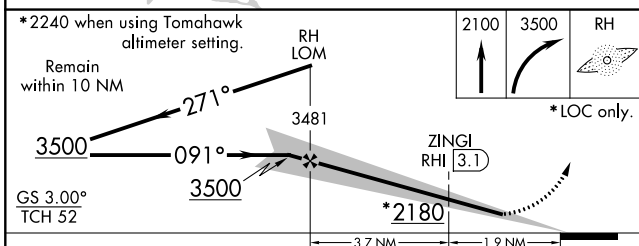
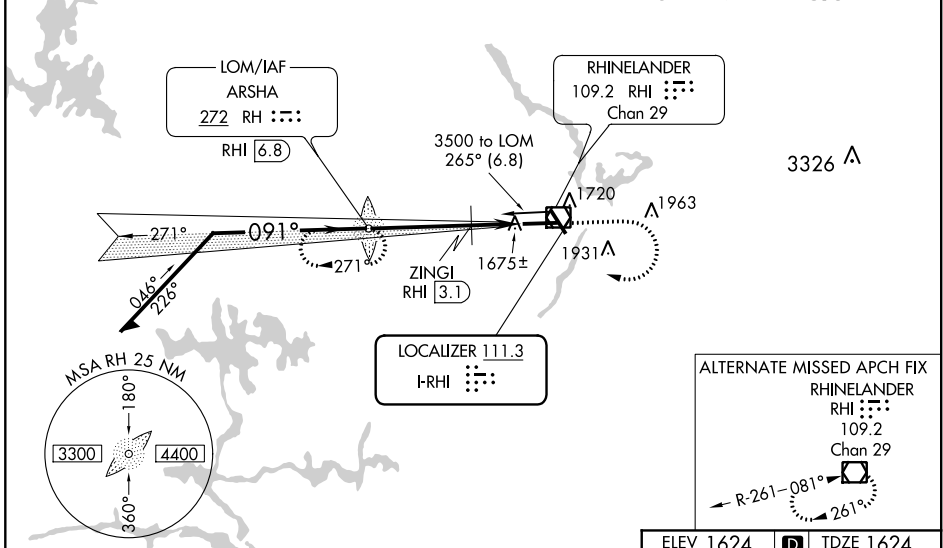
LOC I-RHI <b>111.3</b>	APP CRS <b>091°</b>	Rwy Idg <b>6799</b> TDZE <b>1624</b> Apt Elev <b>1624</b>
---------------------------	------------------------	--

# ILS or LOC RWY 9

RHINELANDER-ONEIDA COUNTY (R.H.I)

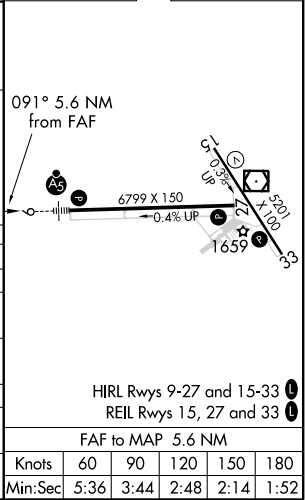
<b>▽</b> <b>△</b> NA ADF required. When local altimeter setting not received, use Tomahawk altimeter setting and increase DA to 1883 feet; increase all MDAs 60 feet and visibility Cat C and D ¼ SM. **DME from RHI VOR/DME.	<b>MALSR</b> 	<b>MISSED APPROACH:</b> Climb to 2100 then climbing right turn to 3500 direct ARSHA LOM/RHI 6.8 DME and hold.

## ADF or DME REQUIRED



ELEV 1624	<b>D</b>	TDZE 1624
-----------	----------	-----------

CATEGORY	A	B	C	D
S-ILS 9	1824-½ 200 (200-½)			
S-LOC 9	2180-½	556 (600-½)	2180-1	2180-1¼
CIRCLING	2180-1	2260-1	2260-1¾	2280-2
	556 (600-1)	636 (700-1)	636 (700-1¾)	656 (700-2)
ZINGI FIX MINIMUMS**				
S-LOC 9	2020-½ 396 (400-½)		2020-¾	
CIRCLING	2100-1	2260-1	2260-1¾	2280-2
	476 (500-1)	636 (700-1)	636 (700-1¾)	656 (700-2)



EC-3, 07 OCT 2021 to 04 NOV 2021

EC-3, 07 OCT 2021 to 04 NOV 2021