

APP CRS	Rwy Idg	5201
150°	TDZE	1600
	Apt Elev	1624

RNAV (GPS) RWY 15

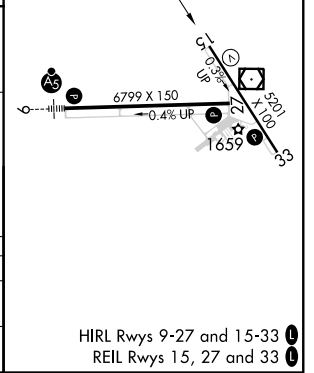
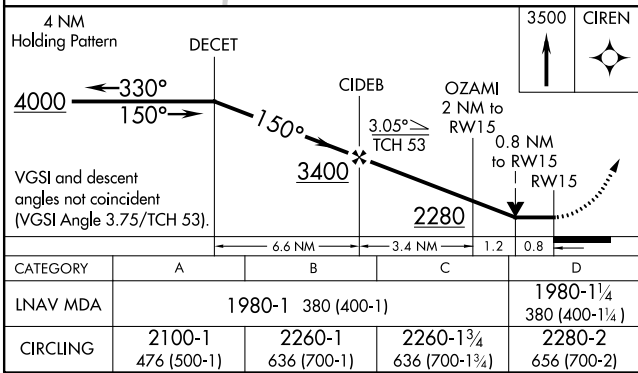
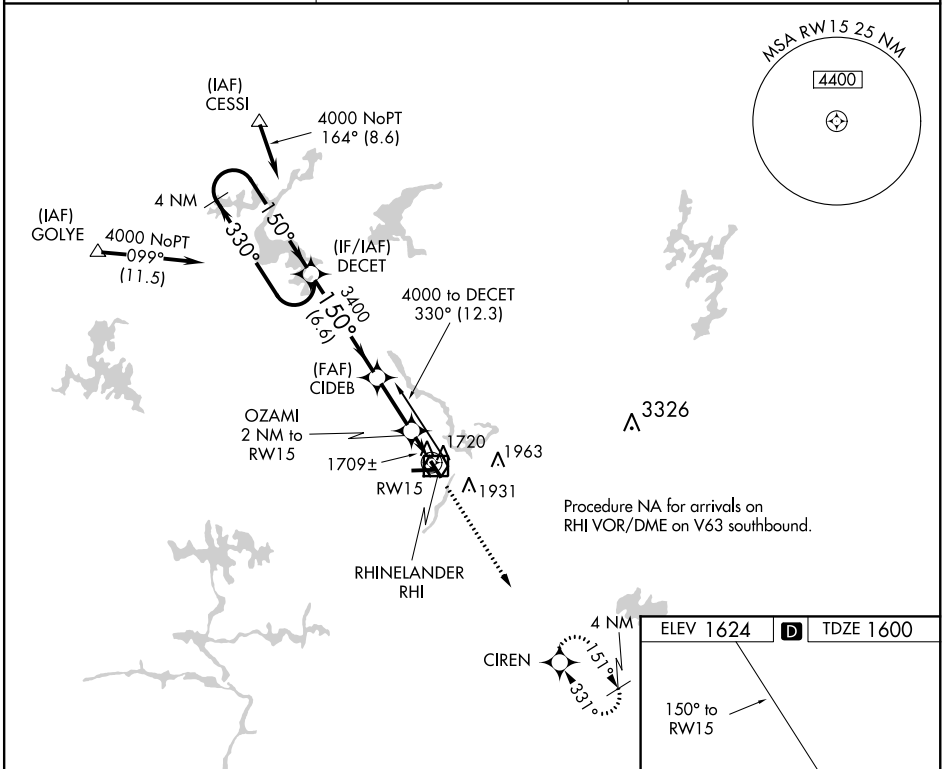
RHINELANDER-ONEIDA COUNTY (RHI)

RNP APCH - GPS.

⚠ Helicopter visibility reduction below 3/4 SM NA. When local altimeter setting not received, use Tomahawk altimeter setting and increase all MDA 60 feet, increase LNAV and Circling visibility Cats C/D 1/4 mile.

MISSED APPROACH:
Climb to 3500 direct CIREN and hold.

ASOS 126.825	MINNEAPOLIS CENTER 133.65 281.5	UNICOM 123.0 (CTAF) ①
-------------------------------	--	--



CATEGORY LNAV MDA CIRCLING	A 2100-1 476 (500-1)	B 2260-1 636 (700-1)	C 2260-1 3/4 636 (700-1 3/4)	D 2280-2 656 (700-2)
----------------------------------	----------------------------	----------------------------	------------------------------------	----------------------------

EC-3, 07 OCT 2021 to 04 NOV 2021

EC-3, 07 OCT 2021 to 04 NOV 2021