

WAAS CH <b>69407</b> <b>W33A</b>	APP CRS <b>330°</b>	Rwy Idg TDZE Apt Elev	<b>5201</b> <b>1611</b> <b>1624</b>
--	------------------------	-----------------------------	---

# RNAV (GPS) RWY 33

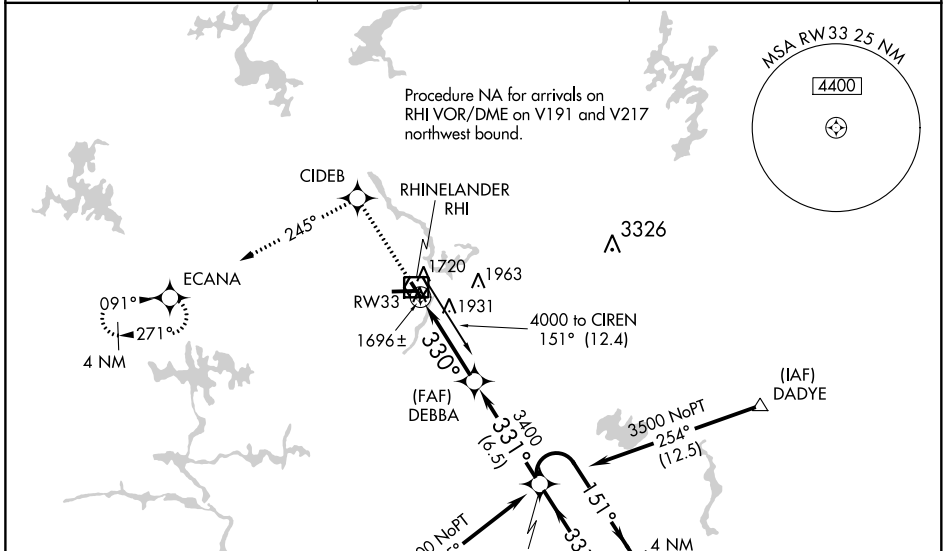
RHINELANDER-ONEIDA COUNTY (RHI)

RNP APCH - GPS.

**⚠** Baro-VNAV NA when using Tomahawk altimeter setting. For uncompensated Baro-VNAV systems, LNAV/VNAV NA below -18°C or above 54°C. Helicopter visibility reduction below ¾ SM NA. When local altimeter setting not received, use Tomahawk altimeter setting; increase LPV DA to 1921 feet; increase LNAV/VNAV DA to 2316 feet and visibility ¼ SM; increase all MDAs 60 feet and visibility Cat C and D ¼ SM.

**⚠** MISSED APPROACH: Climb to 4000 direct CIDEB and on track 245° to ECANA and hold.

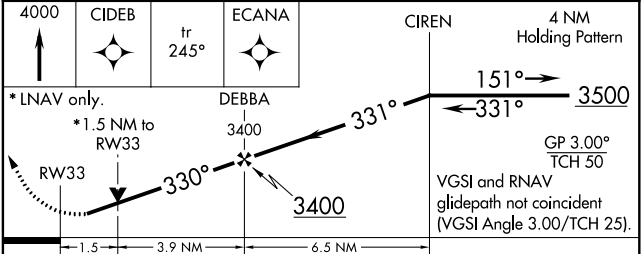
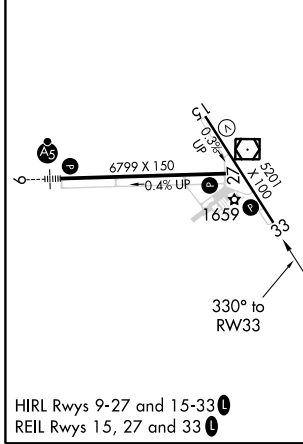
ASOS <b>126.825</b>	MINNEAPOLIS CENTER <b>133.65 281.5</b>	UNICOM <b>123.0</b> (CTAF) <b>📻</b>
------------------------	---	--



EC-3, 07 OCT 2021 to 04 NOV 2021

EC-3, 07 OCT 2021 to 04 NOV 2021

ELEV 1624	<b>D</b>	TDZE 1611
-----------	----------	-----------



CATEGORY	A	B	C	D
LPV DA		1862-1	250 (300-1)	
LNAV/VNAV DA		2257-2 ¼	645 (700-2 ¼)	
LNAV MDA	2120-1	508 (500-1)	2120-1 ½	508 (500-1 ½)
CIRCLING	2120-1 496 (500-1)	2260-1 636 (700-1)	2260-1 ¾ 636 (700-1 ¾)	2280-2 656 (700-2)