

| | | | |
|--|------------------------|---|-------------|
| WAAS CH 97715 W09A | APP CRS 091° | Rwy Idg TDZE 1624 Apt Elev 1624 | 6799 |
|--|------------------------|---|-------------|

RNAV (GPS) RWY 9
RHINELANDER-ONEIDA COUNTY (RHI)

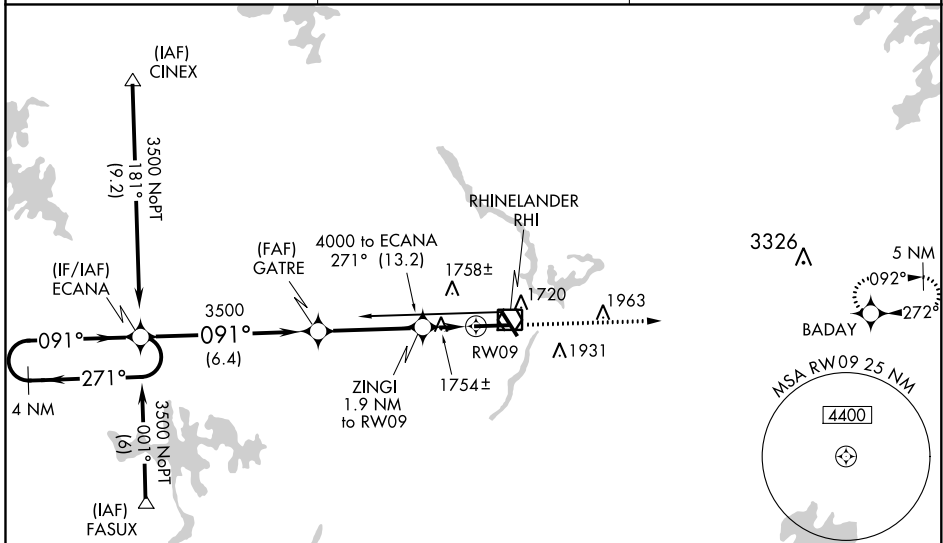
RNP APCH - GPS.

MAJLSR

Baro-VNAV NA when using Tomahawk altimeter setting. For uncompensated Baro-VNAV systems, LNAV/VNAV NA below -18°C or above 54°C. When local altimeter setting not received, use Tomahawk altimeter setting: increase LPV DA to 1883 feet; increase LNAV/VNAV DA to 2109 and visibility 1/8 SM; increase all MDAs 60 feet and visibility Cat C and D 1/4 SM. For inop MAJLSR, increase LNAV/VNAV all Cats visibility to 1 1/8 mile. VDP NA when using Tomahawk altimeter setting.

MISSED APPROACH:
Climb to 4500 direct BADAY and hold.

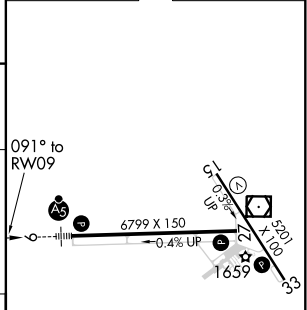
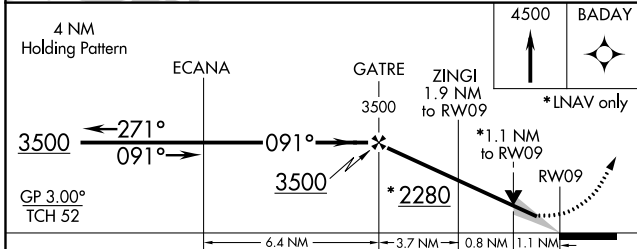
| | | |
|------------------------|---|-------------------------------|
| ASOS 126.825 | MINNEAPOLIS CENTER 133.65 281.5 | UNICOM 123.0 (CTAF) |
|------------------------|---|-------------------------------|



EC-3, 07 OCT 2021 to 04 NOV 2021

EC-3, 07 OCT 2021 to 04 NOV 2021

| | | |
|-----------|----------|-----------|
| ELEV 1624 | D | TDZE 1624 |
|-----------|----------|-----------|



| CATEGORY | A | B | C | D |
|--------------|-----------------------|-----------------------|-------------------------------|-----------------------|
| LPV DA | 1824-1/2 | | 200 (200-1/2) | |
| LNAV/VNAV DA | 2050-1 | | 426 (500-1) | |
| LNAV MDA | 2020-1/2 | 396 (400-1/2) | 2020-5/8 | 396 (400-5/8) |
| CIRCLING | 2100-1 476 (500-1) | 2260-1 636 (700-1) | 2260-1 3/4 636 (700-1 3/4) | 2280-2 656 (700-2) |

HIRL Rwy 9-27 and 15-33
REIL Rwy 15, 27 and 33