

LOC/DME I-CRE <b>111.7</b> Chan <b>54</b>	APP CRS <b>234°</b>	Rwy Idg TDZE <b>29</b> Apt Elev <b>31</b>	<b>5997</b>
---	------------------------	---	-------------

# ILS or LOC RWY 23

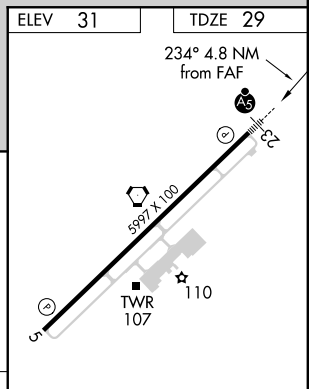
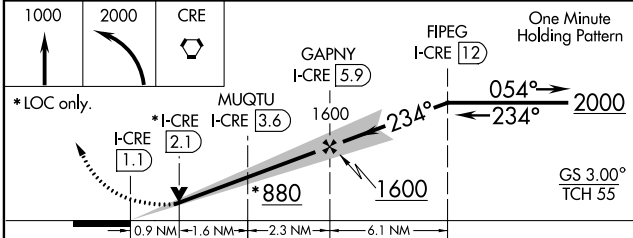
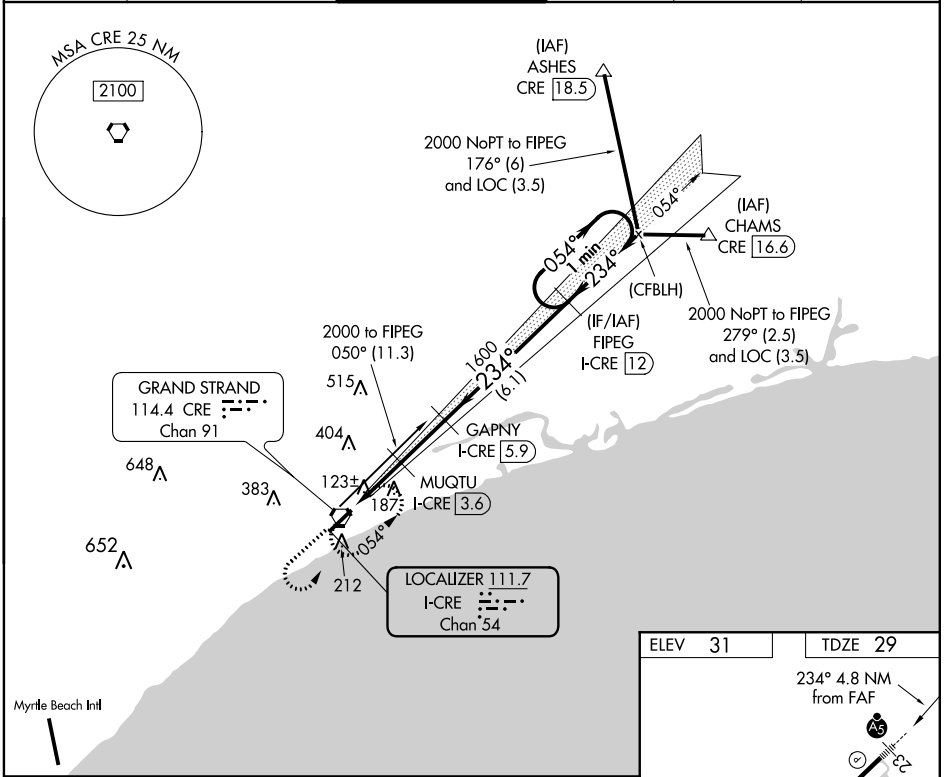
## GRAND STRAND (CRE)

**⚠** When local altimeter setting not received use Myrtle Beach Intl altimeter setting and increase all DA 31 feet and all MDA 40 feet. For inoperative MALS/R, increase S-LOC 23 Cat C and D visibility to 1. VDP NA with Myrtle Beach Intl altimeter setting. DME required.

**MALS/R** 

**MISSED APPROACH:** Climb to 1000 then climbing left turn to 2000 direct CRE VORTAC and hold, continue climb-in-hold to 2000.

ATIS <b>119.625</b>	MYRTLE BEACH APP CON * <b>119.2 350.3</b>	STRAND TOWER * <b>124.6 (CTAF) 0 257.6</b>	GND CON <b>121.8 257.6</b>	CLNC DEL <b>121.8</b>	UNICOM <b>122.95</b>
------------------------	--	---	-------------------------------	--------------------------	-------------------------



CATEGORY	A	B	C	D
S-ILS 23	229-½ 200 (200-½)			
S-LOC 23	380-½ 351 (400-½)	380-⅝ 351 (400-⅝)		
CIRCLING	520-1 489 (500-1)	520-1½ 489 (500-1½)	720-2¼ 689 (700-2¼)	

SE-2, 07 OCT 2021 to 04 NOV 2021

SE-2, 07 OCT 2021 to 04 NOV 2021