

WAAS CH <b>82519</b> <b>W05A</b>	APP CRS <b>054°</b>	Rwy Idg TDZE Apt Elev	<b>5997</b> <b>31</b> <b>31</b>
--	------------------------	-----------------------------	---------------------------------------

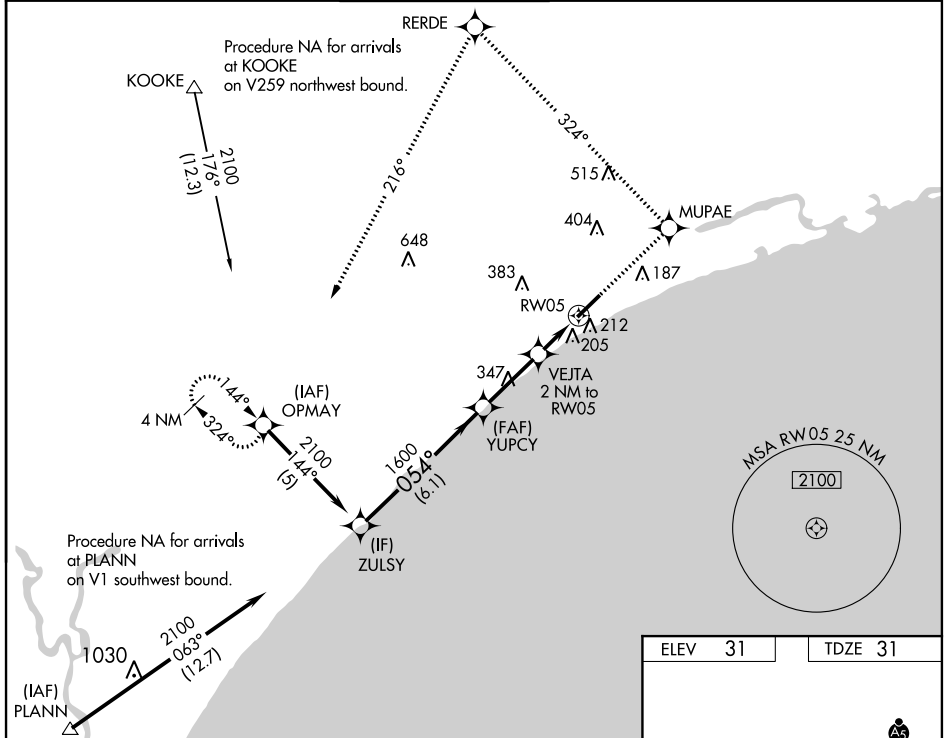
# RNAV (GPS) RWY 5

GRAND STRAND (CRE)

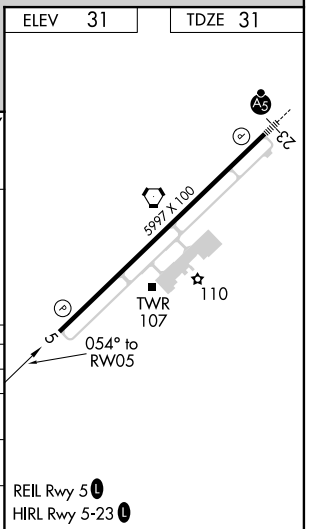
**▼** For uncompensated Baro-VNAV systems, LNAV/VNAV NA below -15°C (5°F) or above 48°C (118°F). DME/DME RNP-0.3 NA. Visibility reduction by helicopters NA. When local altimeter setting not received use Myrtle Beach Intl altimeter setting and increase all DA 31 feet and all MDA 40 feet. VDP and Baro-VNAV NA with Myrtle Beach Intl altimeter setting.

**▲** MISSED APPROACH: Climb to 2100 direct MUPAE and left turn on track 324° to RERDE and left turn on track 216° to OPMAY and hold.

ATIS <b>119.625</b>	MYRTLE BEACH APP CON* <b>119.2 350.3</b>	STRAND TOWER* <b>124.6 (CTAF) 0 257.6</b>	GND CON <b>121.8 257.6</b>	CLNC DEL <b>121.8</b>	UNICOM <b>122.95</b>
------------------------	---	--	-------------------------------	--------------------------	-------------------------



ZULSY	2100	MUPAE	RERDE	OPMAY
Procedure Turn NA	054°	tr 324°	tr 216°	*LNAV only.
GP 3.00° TCH 40	1600	VEJTA 2 NM to RW05	*.2 NM to RW05	RW05
	6.1 NM	2.7 NM	0.8	1.2
CATEGORY	A	B	C	D
LPV DA		281-1	250 (300-1)	
LNAV/VNAV DA		496-1¾	465 (500-1¾)	
LNAV MDA	460-1	429 (500-1)	460-1½ 429 (500-1½)	460-1½ 429 (500-1½)
CIRCLING	520-1	489 (500-1)	720-2 689 (700-2)	720-2½ 689 (700-2½)



SE-2, 07 OCT 2021 to 04 NOV 2021

SE-2, 07 OCT 2021 to 04 NOV 2021