

VORTAC CRE 114.4 Chan 91	APP CRS 238°	Rwy Idg 5997 TDZE 29 Apt Elev 31
--	------------------------	---

VOR RWY 23

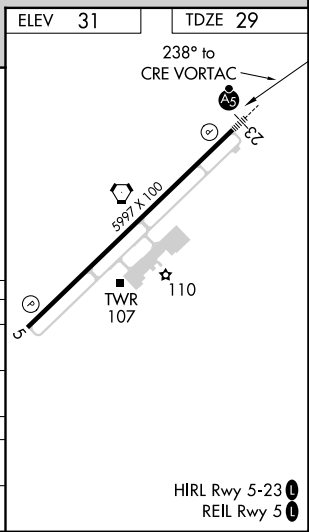
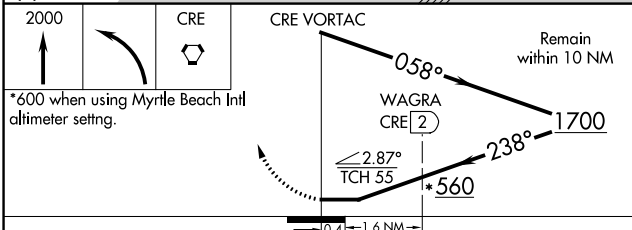
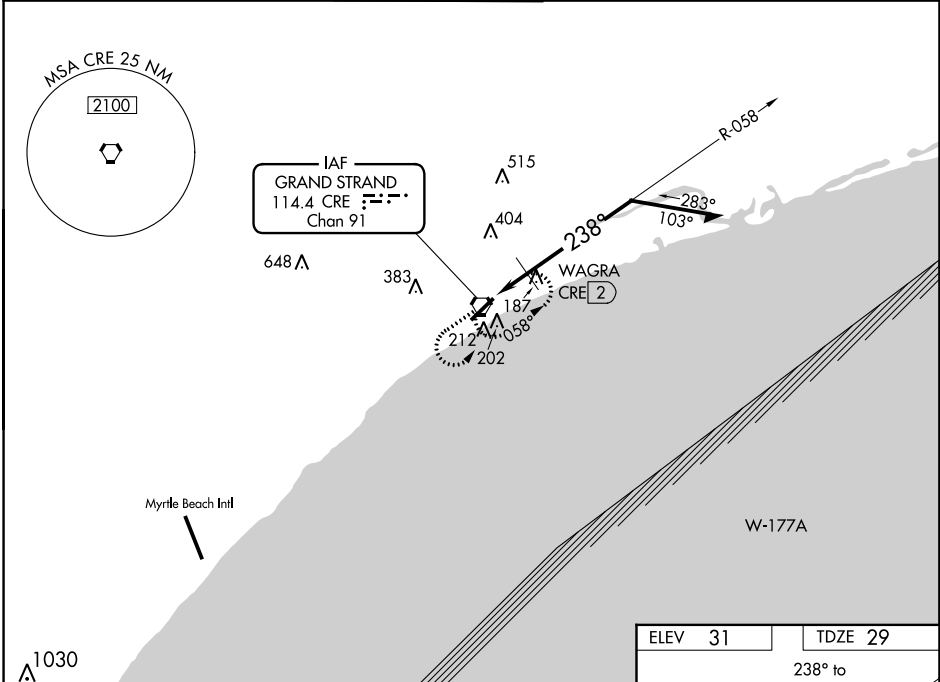
GRAND STRAND (CRE)

⚠ For inoperative MALS, increase S-23 and S-23 DME minimums Cats A and B visibility to 1 mile. Visibility reduction by helicopters NA. When local altimeter setting not received use Myrtle Beach Intl altimeter setting and increase all MDA 40 feet. For inoperative MALS when using Myrtle Beach Intl altimeter setting, increase S-23 and S-23 DME minimums Cats A and B visibility to 1 mile.



MISSED APPROACH: Climb to 2000 then left turn direct CRE VORTAC and hold.

ATIS 119.625	MYRTLE BEACH APP CON* 119.2 350.3	STRAND TOWER* 124.6 (CTAF) 257.6	GND CON 121.8 257.6	CLNC DEL 121.8	UNICOM 122.95
------------------------	---	--	-------------------------------	--------------------------	-------------------------



CATEGORY	A	B	C	D
S-23	560-3/4	531 (600-3/4)	560-1 531 (600-1)	560-1 1/4 531 (600-1 1/4)
CIRCLING	560-1	529 (600-1)	720-2 689 (700-2)	720-2 1/4 689 (700-2 1/4)
WAGRA FIX MINIMUMS				
S-23	480-3/4	451 (500-3/4)	480-7/8 451 (500-7/8)	480-1 451 (500-1)
CIRCLING	520-1	489 (500-1)	720-2 689 (700-2)	720-2 1/4 689 (700-2 1/4)

SE-2, 07 OCT 2021 to 04 NOV 2021

SE-2, 07 OCT 2021 to 04 NOV 2021