

LOC/DME I-ESC 109.3 Chan 30	APP CRS 274°	Rwy Idg TDZE Apt Elev	6498 596 609
--	------------------------	-----------------------------	---

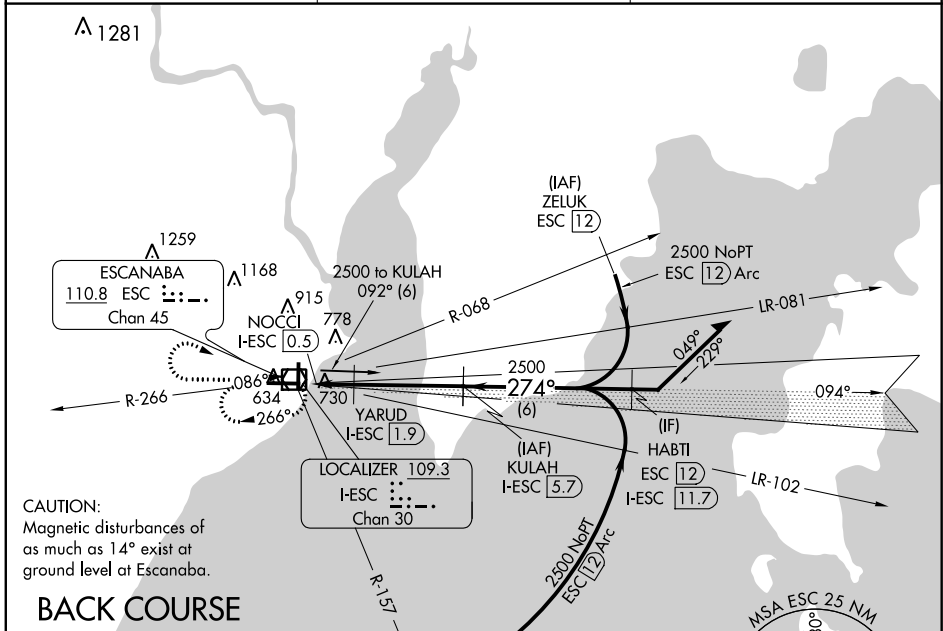
LOC/DME BC RWY 27

DELTA COUNTY (ESC)

⚠ Rwy 27 Straight-In and Circling and Circling to Rwy 19 NA at night. Helicopter visibility reduction below 1 SM NA. When local altimeter setting not received, use Marquette altimeter setting and increase all MDA 180 feet and S-27 Cat C and D visibility 3/8 mile and Circling Cat C visibility 1/2 mile and Cat D visibility 1/4 mile.

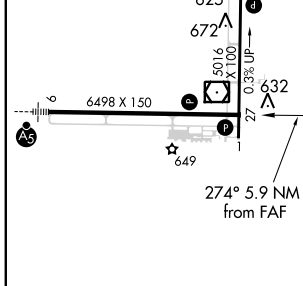
⚠ MISSED APPROACH: Climb to 2500 then right turn direct ESC VOR/DME and hold.

AWOS-3PT 121.425	MINNEAPOLIS CENTER 127.65	UNICOM 122.8 (CTAF) 0
----------------------------	-------------------------------------	---------------------------------



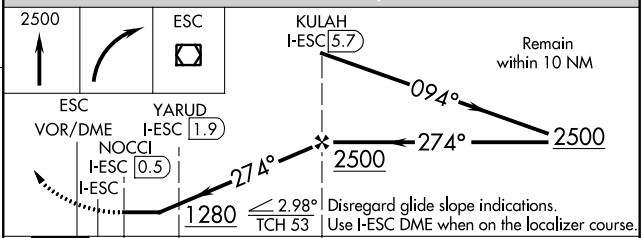
BACK COURSE

ELEV 609	D	TDZE 596
----------	----------	----------



HIRL Rwy 9-27 1	MIRL Rwy 1-19 1	REIL Rws 1 and 27 1
------------------------	------------------------	----------------------------

DME REQUIRED



CATEGORY	A	B	C	D
S-27	1040-1	444 (500-1)	1040-1 3/8	444 (500-1 3/8)
C CIRCLING	1060-1	1080-1	1280-2	1480-2 3/4
	451 (500-1)	471 (500-1)	671 (700-2)	871 (900-2 3/4)

EC-1, 07 OCT 2021 to 04 NOV 2021

EC-1, 07 OCT 2021 to 04 NOV 2021