

WAAS CH <b>69333</b> <b>W01A</b>	APP CRS <b>004°</b>	Rwy Idg TDZE Apt Elev	<b>5016</b> <b>600</b> <b>609</b>
----------------------------------------	------------------------	-----------------------------	-----------------------------------------

# RNAV (GPS) RWY 1

DELTA COUNTY (ESC)

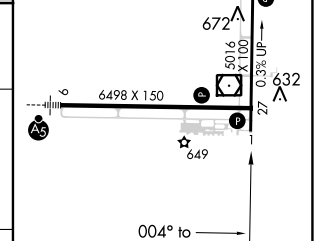
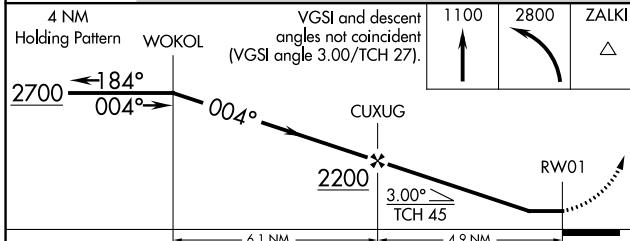
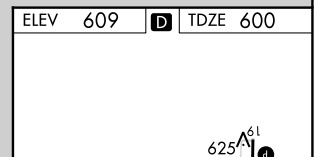
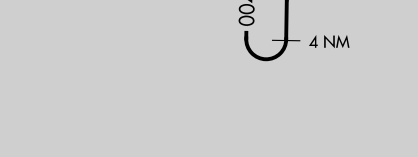
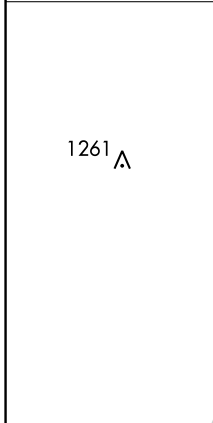
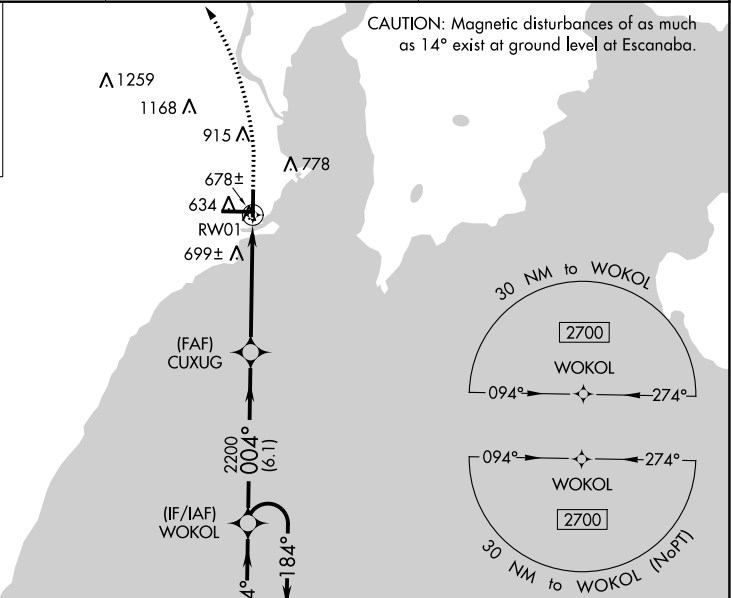
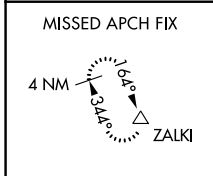
**⚠** Rwy 1 helicopter visibility reduction below 1 SM NA. DME/DME RNP-0.3 NA. Straight-in Rwy 1 NA at night, Circling Rwy 1, 19 NA at night. When local altimeter setting not received, use Marquette altimeter setting and increase all MDA 180 feet and increase LP Cat C and D visibility ½ SM, LNAV Cat C and D visibility ⅔ SM, and Circling Cat C visibility ½ SM and Cat D visibility ¼ SM.

**MISSED APPROACH:**  
Climb to 1100, then climbing left turn to 2800 direct ZALKI and hold.

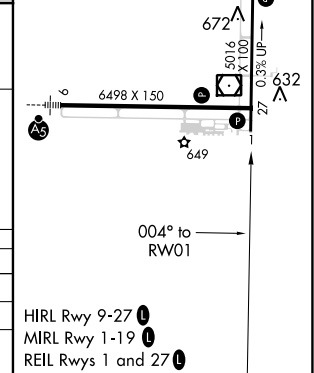
AWOS-3PT  
**121.425**

MINNEAPOLIS CENTER  
**127.65**

UNICOM  
**122.8 (CTAF) 0**



CATEGORY	A	B	C	D
LP MDA		940-1	340 (400-1)	
LNAV MDA		960-1	360 (400-1)	
<b>C</b> CIRCLING	1060-1 451 (500-1)	1080-1 471 (500-1)	1280-2 671 (700-2)	1480-2 <sup>3</sup> / <sub>4</sub> 871 (900-2 <sup>3</sup> / <sub>4</sub> )



EC-1, 07 OCT 2021 to 04 NOV 2021

EC-1, 07 OCT 2021 to 04 NOV 2021