

WAAS CH <b>63128</b> <b>W27A</b>	APP CRS <b>274°</b>	Rwy Idg TDZE Apt Elev	<b>6498</b> <b>596</b> <b>609</b>
--	------------------------	-----------------------------	---

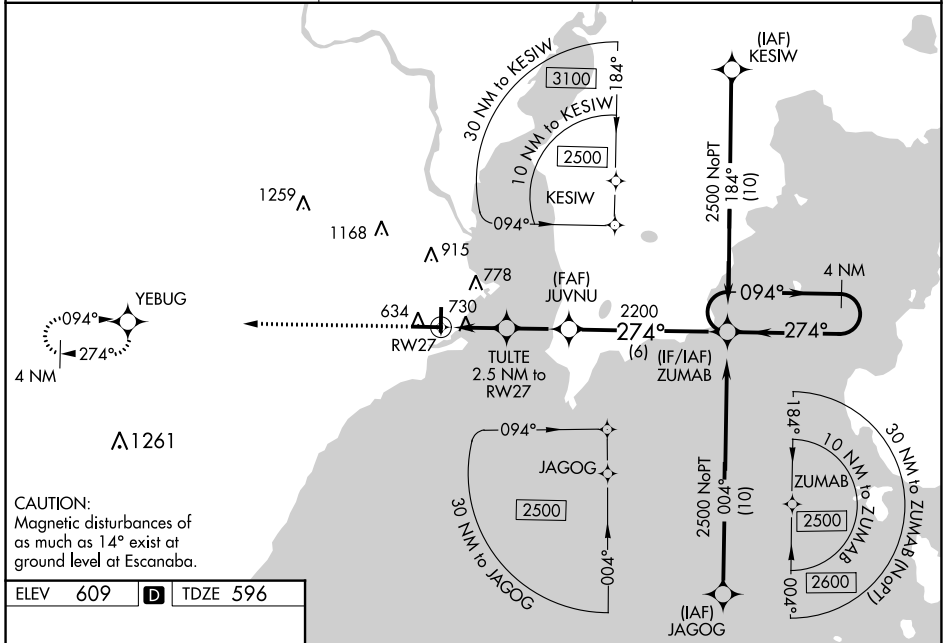
# RNAV (GPS) RWY 27

DELTA COUNTY (E/S/C)

**⚠** Baro-VNAV NA when using Marquette altimeter setting. For uncompensated Baro-VNAV systems, LNAV/VNAV NA below -16°C (4°F) or above 54°C (130°F). Rwy 27 Straight-in and Circling and Circling to Rwy 19 NA at night. DME/DME RNP-0.3 NA. Helicopter visibility reduction below 1 SM NA. When local altimeter setting not received, use Marquette altimeter setting and increase all DA 178 feet and all MDA 180 feet and increase LPV all Cats visibility  $\frac{3}{8}$  mile, LNAV/VNAV all Cats visibility  $\frac{3}{8}$  mile, LNAV Cat C and D visibility  $\frac{3}{8}$  mile, and Circling Cat C visibility  $\frac{1}{2}$  mile and Cat D visibility  $\frac{1}{4}$  mile.

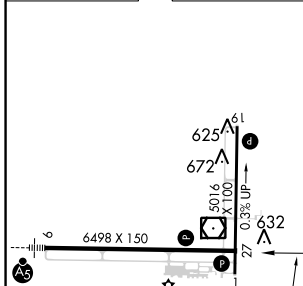
**MISSED APPROACH:**  
Climb to 2500 direct YEBUG and hold.

AWOS-3PT <b>121.425</b>	MINNEAPOLIS CENTER <b>127.65</b>	UNICOM <b>122.8 (CTAF) 0</b>
----------------------------	-------------------------------------	---------------------------------



**CAUTION:**  
Magnetic disturbances of as much as 14° exist at ground level at Escanaba.

ELEV 609	<b>D</b>	TDZE 596
----------	----------	----------



CATEGORY	A	B	C	D
LPV DA		846-1	250 (300-1)	
LNAV/VNAV DA		1076-1 $\frac{5}{8}$	480 (500-1 $\frac{5}{8}$ )	
LNAV MDA	1040-1	444 (500-1)	1040-1 $\frac{3}{8}$	444 (500-1 $\frac{3}{8}$ )
<b>C</b> CIRCLING	1060-1 451 (500-1)	1080-1 471 (500-1)	1280-2 671 (700-2)	1480-2 $\frac{3}{4}$ 871 (900-2 $\frac{3}{4}$ )

HIRL Rwy 9-27 **0**  
MIRL Rwy 1-19 **0**  
REIL Rwy 1 and 27 **0**

EC-1, 07 OCT 2021 to 04 NOV 2021

EC-1, 07 OCT 2021 to 04 NOV 2021