

VOR/DME ESC 110.8 Chan 45	APP CRS 351°	Rwy Idg TDZE Apt Elev	5016 600 609
--	------------------------	-----------------------------	---

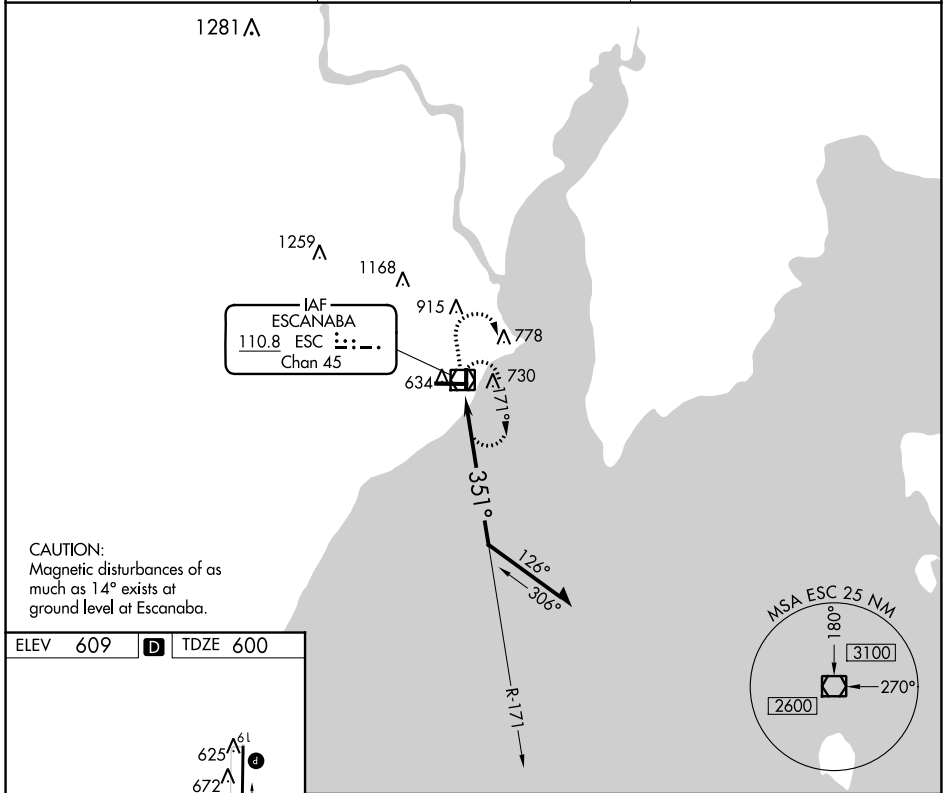
VOR RWY 1

DELTA COUNTY (ESC)

⚠ Straight-in Rwy 1 NA at night, Circling Rwy 1, 19 NA at night. Rwy 1 helicopter visibility reduction below 1 SM NA. When local altimeter setting not received, use Marquette altimeter setting and increase all MDA 180 feet and increase S-01 Cat C and D visibility ½ SM, Circling Cat C visibility ½ SM and Cat D visibility ¼ SM.

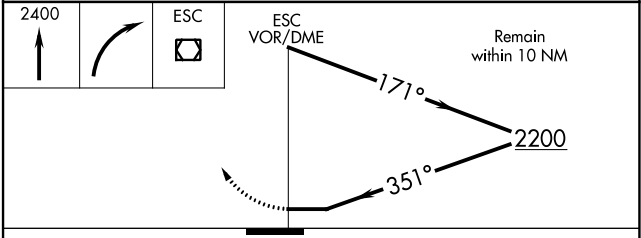
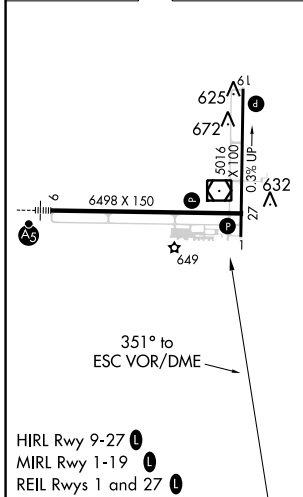
⚠ MISSED APPROACH: Climb to 2400 then right turn direct ESC VOR/DME and hold.

AWOS-3PT 121.425	MINNEAPOLIS CENTER 127.65	UNICOM 122.8 (CTAF) 0
----------------------------	-------------------------------------	--



CAUTION:
Magnetic disturbances of as much as 14° exists at ground level at Escanaba.

ELEV 609	D	TDZE 600
----------	----------	----------



CATEGORY	A	B	C	D
S-1	1080-1 480 (500-1)		1080-1 ³ / ₈ 480 (500-1 ³ / ₈)	
C CIRCLING	1080-1 471 (500-1)		1280-2 671 (700-2)	1480-2 ³ / ₄ 871 (900-2 ³ / ₄)

EC-1, 07 OCT 2021 to 04 NOV 2021

EC-1, 07 OCT 2021 to 04 NOV 2021