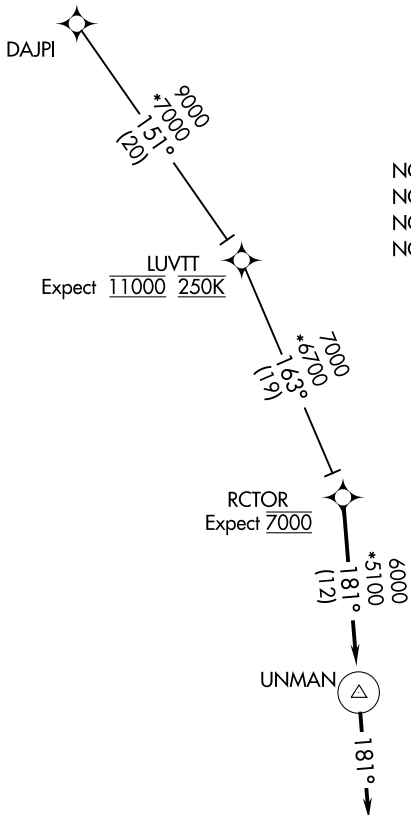


# RCTOR TWO ARRIVAL (RNAV)

GREER, SOUTH CAROLINA

GREER APP CON  
118.8 270.275 (WEST)  
119.4 350.2 (EAST)  
GSP ATIS  
134.25



- NOTE: RADAR required.
- NOTE: RNAV 1.
- NOTE: DME/DME/IRU or GPS required.
- NOTE: Turbojet and Turboprop aircraft only.

Expect 11000 250K

RCTOR  
Expect 7000

SPARTANBURG DOWNTOWN MEML/  
SIMPSON FLD

GREENVILLE  
DOWNTOWN

GREENVILLE  
SPARTANBURG  
INTL

DONALDSON  
FLD

NOTE: Chart not to scale.

## ARRIVAL ROUTE DESCRIPTION

### DAJPI TRANSITION (DAJPI.RCTOR2)

From RCTOR on track 181° to UNMAN, then on heading 181°. Expect RADAR vectors to final approach course.

# RCTOR TWO ARRIVAL (RNAV)

GREER, SOUTH CAROLINA

SE-2, 07 OCT 2021 to 04 NOV 2021

SE-2, 07 OCT 2021 to 04 NOV 2021