

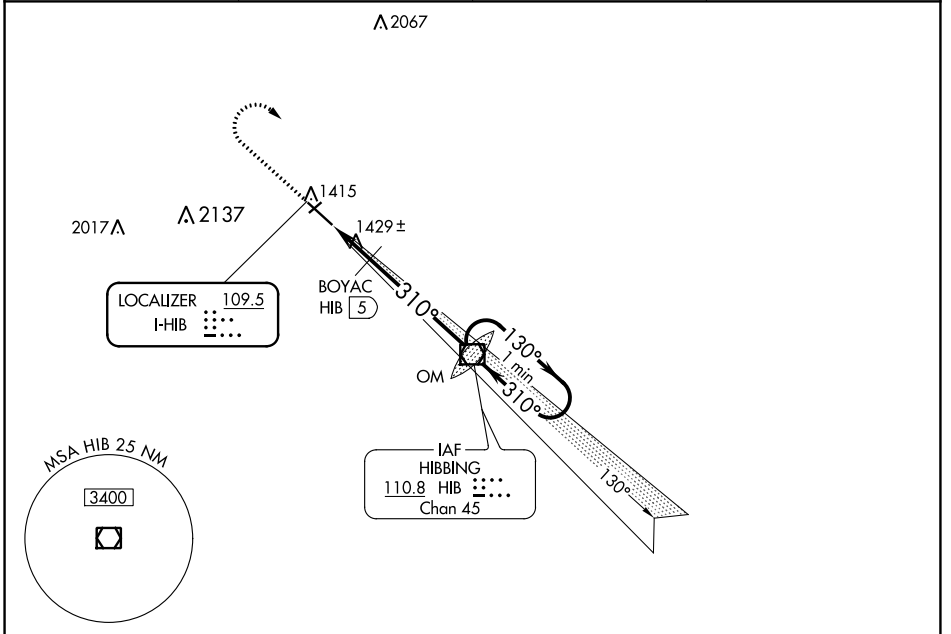
LOC I-HIB 109.5	APP CRS 310°	Rwy Idg 6758 TDZE 1343 Apt Elev 1354
---------------------------	------------------------	--

ILS or LOC RWY 31

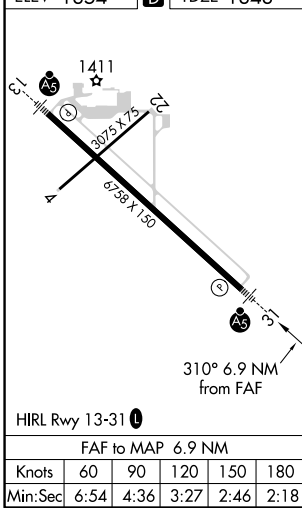
RANGE RGNL (HIB)

<p>▼ For inop MALSR, increase BOYAC FIX minimums S-LOC 31 Cat D visibility to 1. # DME from HIB VOR/DME.</p>	<p>MALSR</p>	<p>MISSED APPROACH: Climb to 2500 then climbing right turn to 3600 direct HIB VOR/DME and hold.</p>
--	--------------	---

ASOS 126.425	DULUTH APP CON 125.45 233.7	CLNC DEL 127.4	UNICOM 123.0 (CTAF) 0
------------------------	---------------------------------------	--------------------------	---------------------------------



ELEV 1354	D	TDZE 1343
-----------	---	-----------



<p>2500</p> <p>3600</p> <p>HIB</p> <p>BOYAC HIB 5</p> <p>HIB VOR/DME OM 3558</p> <p>One Minute Holding Pattern</p> <p>130° → 3600</p> <p>← 310°</p> <p>1740*</p> <p>1.9 NM</p> <p>5 NM</p> <p>* LOC only</p> <p>GS 2.90° TCH 60</p>				
CATEGORY	A	B	C	D
S-ILS 31	1543-½ 200 (200-½)			
S-LOC 31	1740-½ 397 (400-½)			1740-¾ 397 (400-¾)
CIRCLING	1820-1 466 (500-1)	1840-1 486 (500-1)	1840-1½ 486 (500-1½)	1960-2 606 (700-2)
# BOYAC FIX MINIMUMS				
S-LOC 31	1680-½ 337 (400-½)			1680-¾ 337 (400-¾)
CIRCLING	1820-1 466 (500-1)	1840-1 486 (500-1)	1840-1½ 486 (500-1½)	1960-2 606 (700-2)

NC-1, 07 OCT 2021 to 04 NOV 2021

NC-1, 07 OCT 2021 to 04 NOV 2021