

WAAS CH 65722 W31A	APP CRS 310°	Rwy Idg TDZE Apt Elev	6758 1345 1354
--	------------------------	-----------------------------	---

RNAV (GPS) RWY 31

RANGE RGNL (HIB)

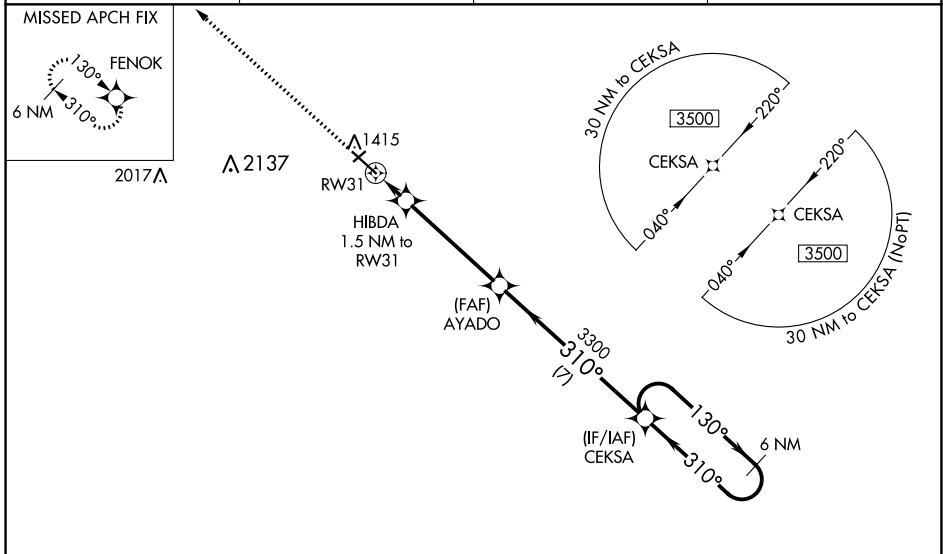
⚠ Circling to Rwy 4 NA at night. For uncompensated Baro-VNAV systems, LNAV/VNAV NA below -17°C (2°F) or above 35°C (95°F). DME/DME RNP-0.3 NA. VDP and Baro-VNAV NA when using Eveleth altimeter setting. When local altimeter setting not received, use Eveleth altimeter setting and increase all DA 36 feet and all MDA 40 feet. For inop MALSRS increase LNAV/VNAV all Cats visibility to ¾ mile, LNAV Cat C/D to 1 mile. For inop MALSRS when using Eveleth altimeter setting, increase LNAV/VNAV all Cats visibility to ⅞ mile.

MALSRS

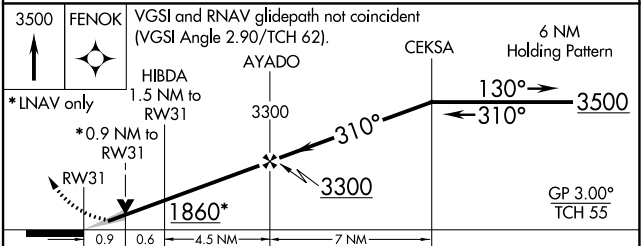
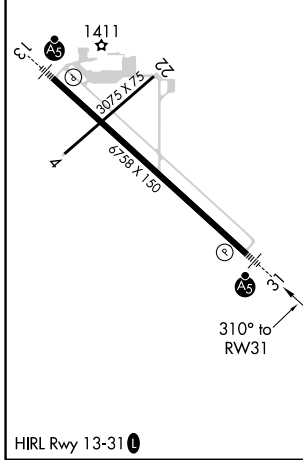


MISSED APPROACH: Climb to 3500 direct FENOK and hold.

ASOS 126.425	DULUTH APP CON 125.45 233.7	CLNC DEL 127.4	UNICOM 123.0 (CTAF) 0
------------------------	---------------------------------------	--------------------------	---------------------------------



ELEV 1354	D	TDZE 1345
-----------	----------	-----------



CATEGORY	A	B	C	D
LPV DA	1545-½		200 (200-½)	
LNAV/VNAV DA	1595-½		250 (300-½)	
LNAV MDA	1680-½ 335 (400-½)		1680-⅝ 335 (400-⅝)	
CIRCLING	1820-1 466 (500-1)	1840-1 486 (500-1)	1840-1½ 486 (500-1½)	1960-2 606 (700-2)

NC-1, 07 OCT 2021 to 04 NOV 2021

NC-1, 07 OCT 2021 to 04 NOV 2021