

DOVER FIVE DEPARTURE (RNAV)

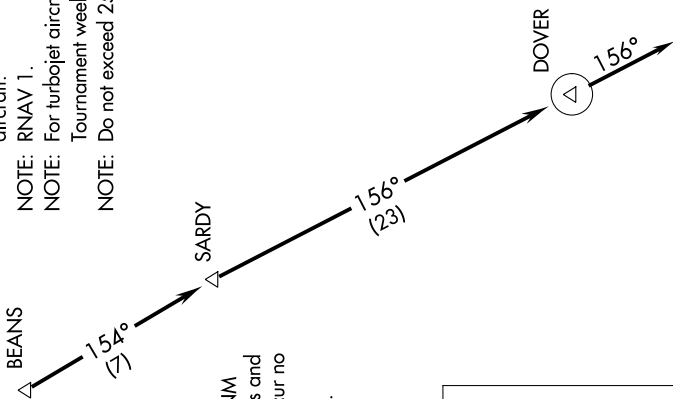
SE-2, 07 OCT 2021 to 04 NOV 2021

AUGUSTA DEP CON ★
119.15 284.625
CLNC DEL 126.075
CTAF
122.8

**TOP ALTITUDE:
ASSIGNED BY ATC**



NOTE: DME/DME/IRU or GPS required.
NOTE: RADAR required for non-GPS equipped aircraft.
NOTE: RNAV 1.
NOTE: For turbojet aircraft during Masters Golf Tournament week.
NOTE: Do not exceed 250K until advised by ATC.



TAKEOFF MINIMUMS

Rwys 7, 25: Standard.
Rwy 1: 300-1/4 or standard with minimum climb of 216' per NM to 700, or alternatively, with standard takeoff minimums and a normal 200' per NM climb gradient, takeoff must occur no later than 1400' prior to DER.
Rwy 19: Standard with minimum climb of 201' per NM to 1000.

DEPARTURE ROUTE DESCRIPTION

TAKEOFF RWYS 1, 7, 19, 25: Climb heading assigned by ATC for vectors to BEANS, then on depicted route to DOVER, then on heading 156° for RADAR vectors, thence. . . .
... maintain altitude assigned by ATC. Expect clearance to filed altitude/flight level within 10 minutes after departure.

NOTE: Chart not to scale.

DOVER FIVE DEPARTURE (RNAV)

SE-2, 07 OCT 2021 to 04 NOV 2021