

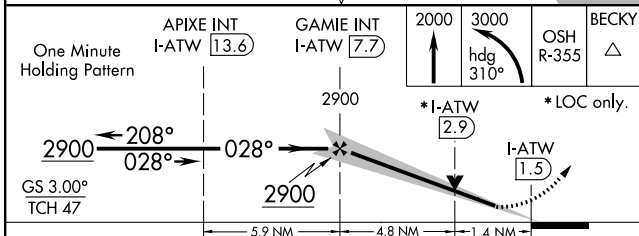
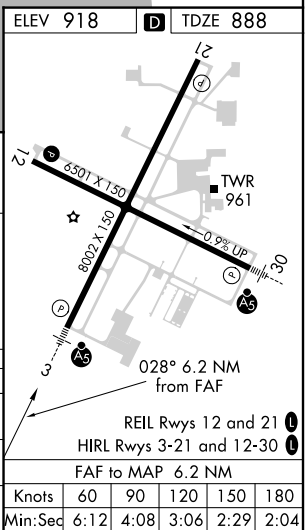
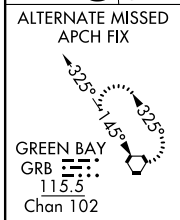
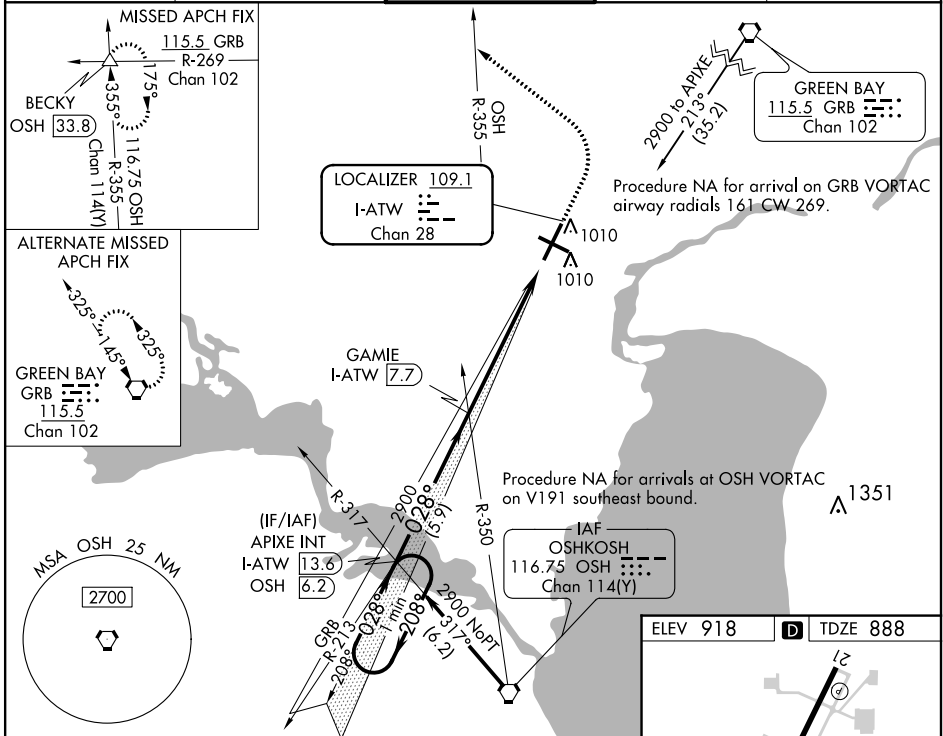
LOC/DME I-ATW 109.1 Chan 28	APP CRS 028°	Rwy Idg 8002	TDZE 888	Apt Elev 918
--	------------------------	------------------------	--------------------	------------------------

ILS or LOC RWY 3

APPLETON INTL (ATW)

<p>⚠ For inop ALS, increase S-LOC 3 Cats C/D visibility to 1 3/8 SM.</p>	<p>MALSR</p>	<p>MISSED APPROACH: Climb to 2000 then climbing left turn to 3000 on heading 310° and OSH VORTAC R-355 to BECKY INT/ OSH VORTAC 33.8 DME and hold.</p>
---	--------------	--

ATIS 127.15	GREEN BAY APP CON* 126.3 338.2	APPLETON TOWER* 119.6 (CTAF) Ⓛ	GND CON 121.7	UNICOM 122.95
-----------------------	--	---	-------------------------	-------------------------



CATEGORY	A	B	C	D
S-ILS 3	1088/24		200 (200-1/2)	
S-LOC 3	1380/24	492 (500-1/2)	1380/50	492 (500-1)
C CIRCLING	1380-1	462 (500-1)	1400-1 1/2 482 (500-1 1/2)	1480-2 562 (600-2)

EC-3, 07 OCT 2021 to 04 NOV 2021

EC-3, 07 OCT 2021 to 04 NOV 2021